

Wichita TMC Support- Monthly Incident Report for April 2014

There were a total of **189** actively logged incidents during the normal TMC staffed hours of 6am to 7pm. **76** incidents occurred along the **US-54** corridor, **26** occurred along **K-96**, **57** along **I-135**, and **30** along **I-235**. Any congestion incidents that were logged by the MIST system without additional operator information were excluded from the analysis. Below is a breakdown of active incident type as well as average duration of incident by type.

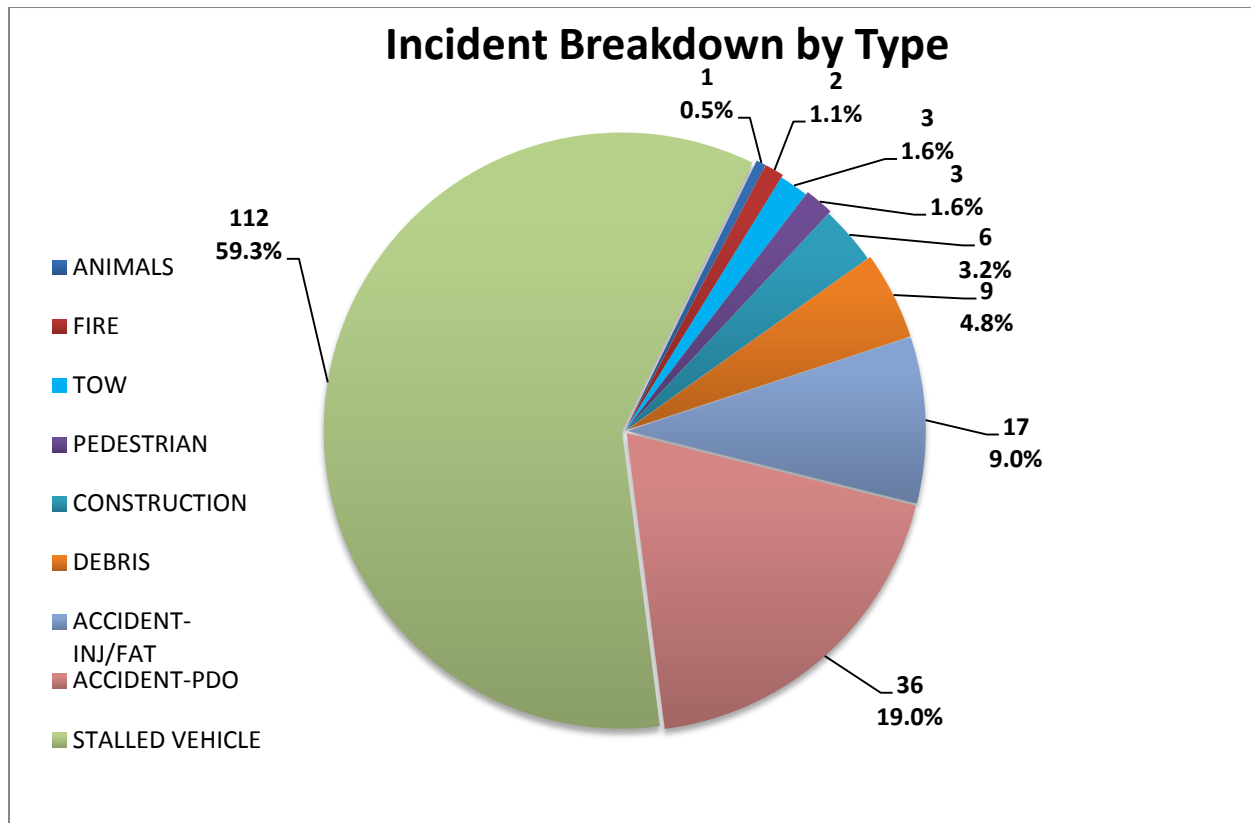
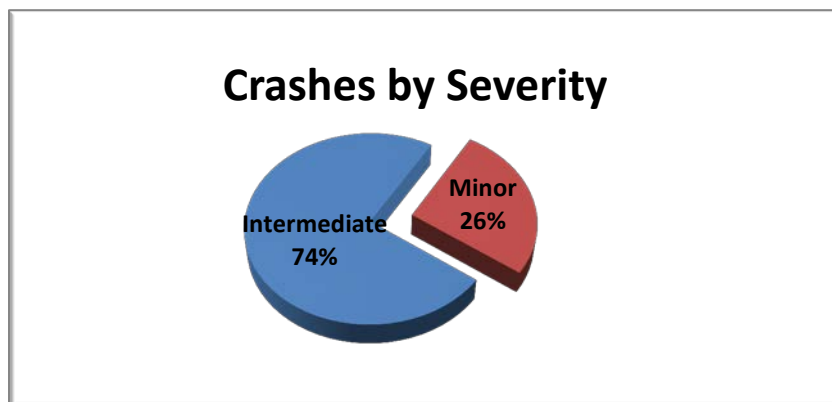


Figure 1: Number and percentage of actively logged incidents in MIST for the month of April broken out by type of incident.



Severity Levels
 Minor- duration under 30 min.
 Intermediate- duration of 30 min. to 2 hrs.
 Major – duration greater than 2 hrs.

Figure 2: injury and non-injury crashes actively logged in MIST for the month of April broken out by severity. Crashes include accidents only. No logged crash duration exceeded 2 hours.

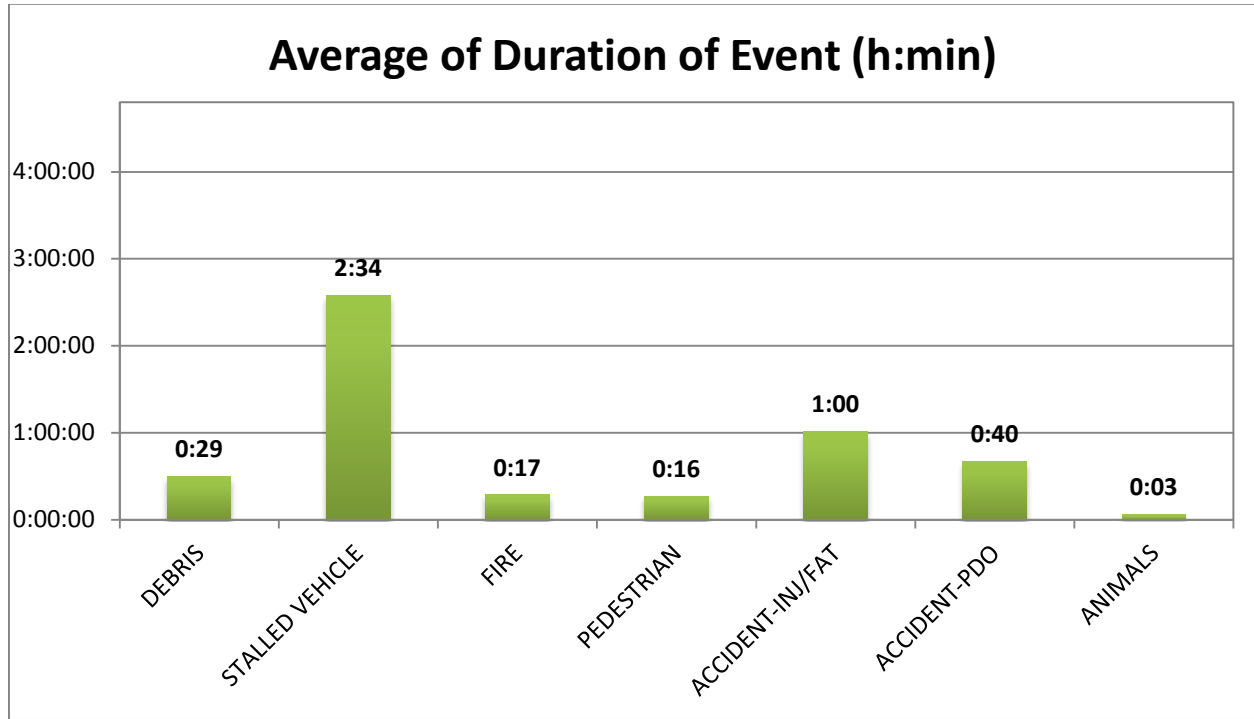


Figure 3: Average Duration of Incident by type for the month of April. Construction and tow excluded for clarity.