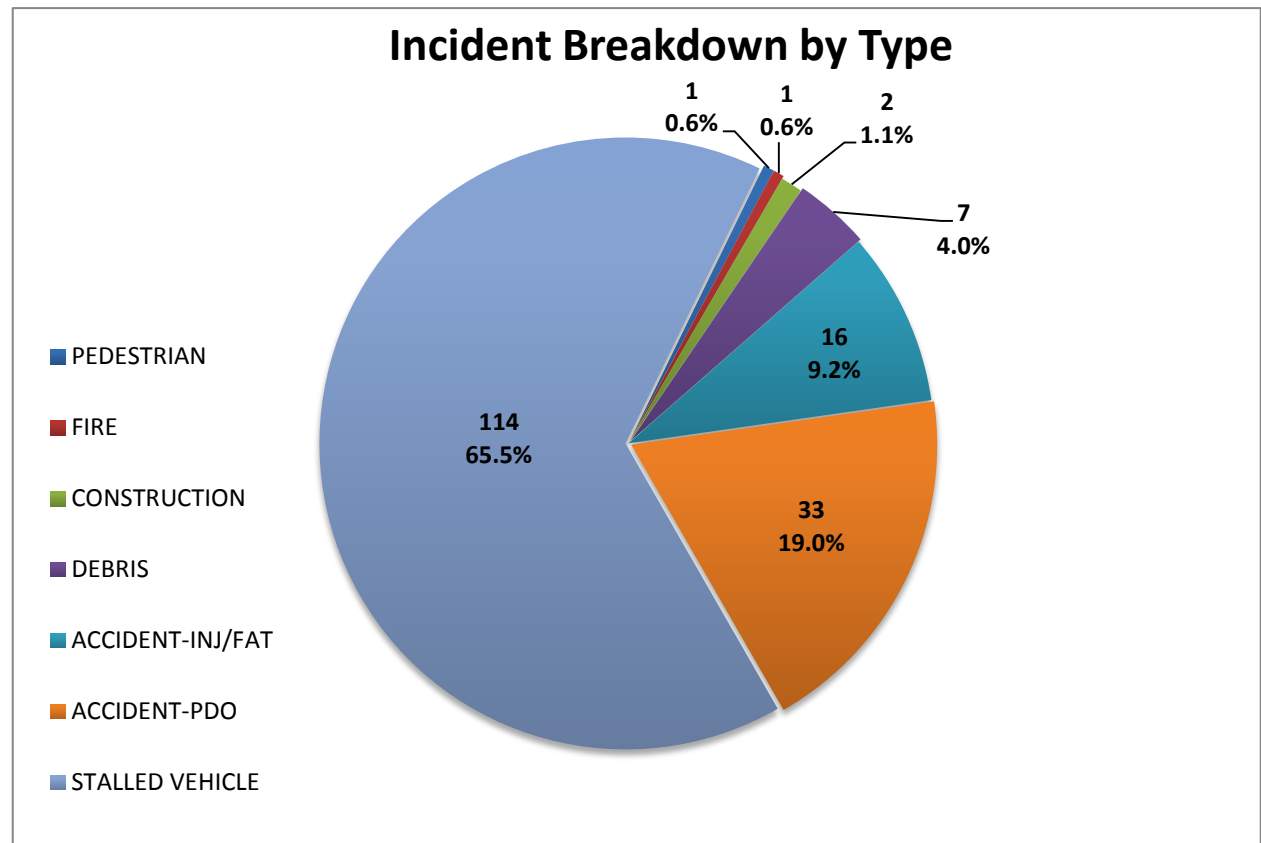
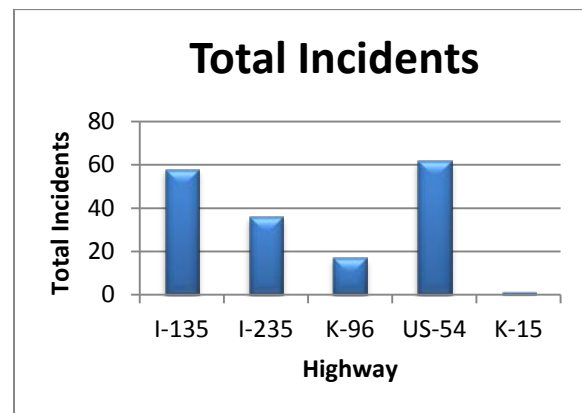


## Wichita TMC Support- Monthly Incident Report for July 2014

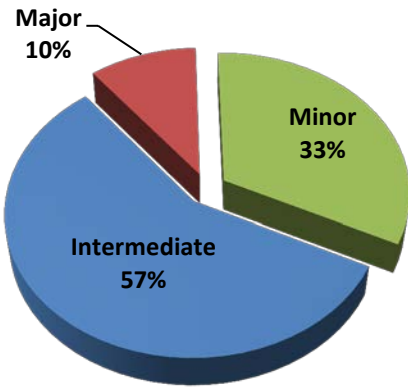
There were a total of **173** actively logged incidents during the normal TMC staffed hours of 6am to 7pm, Monday-Friday. Below is a breakdown of active incident type as well as average duration of incident by type. Incidents are only reported where TMC system coverage is available for verification.

Highway	Number of Incidents
I-135	58
I-235	36
K-96	17
US-54	62
K-15	1
<b>Grand Total</b>	<b>174</b>



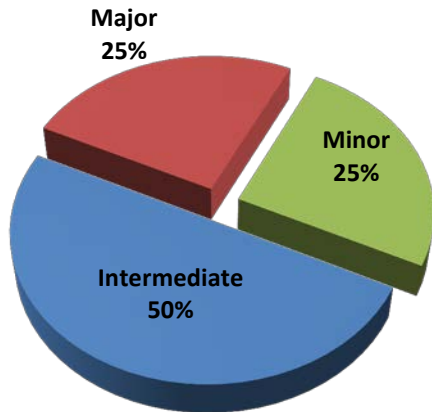
**Figure 1: Number and percentage of actively logged incidents in MIST for the month of July broken out by type of incident.**

## Total Crashes by Severity

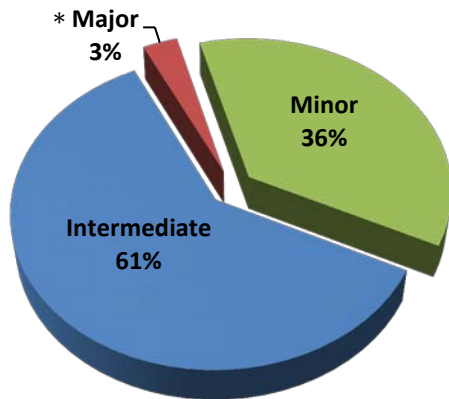


**Severity Levels**  
 Minor- duration under 30 min.  
 Intermediate- duration of 30 min. to 2 hrs.  
 Major – duration greater than 2 hrs.

## Injury/Fatality Crashes by Severity



## Non-Injury Crashes by Severity



\*One "Major" non-injury crash was logged. The total crash duration was 2hrs and 1 minute.

## Crash Clearance Time by Highway

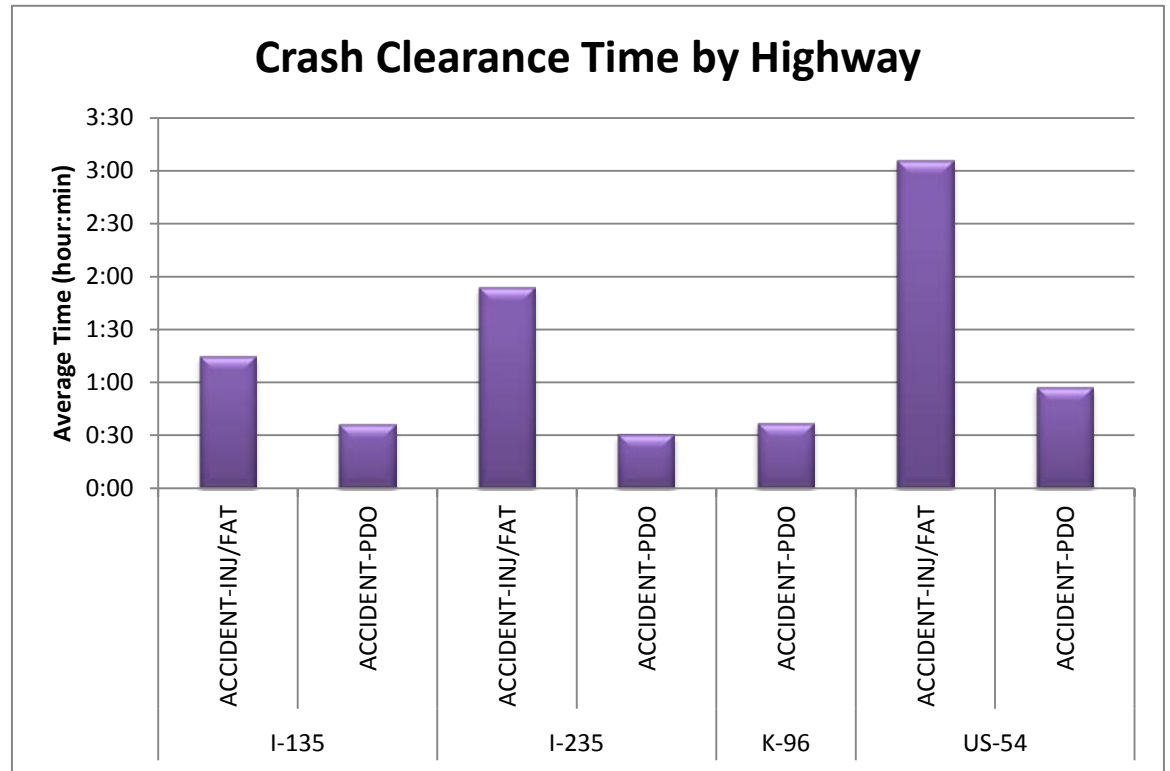


Figure 2: Average Crash Clearance Time by Highway. Crashes are broken out by "Injury/Fatality" and "Property Damage Only".

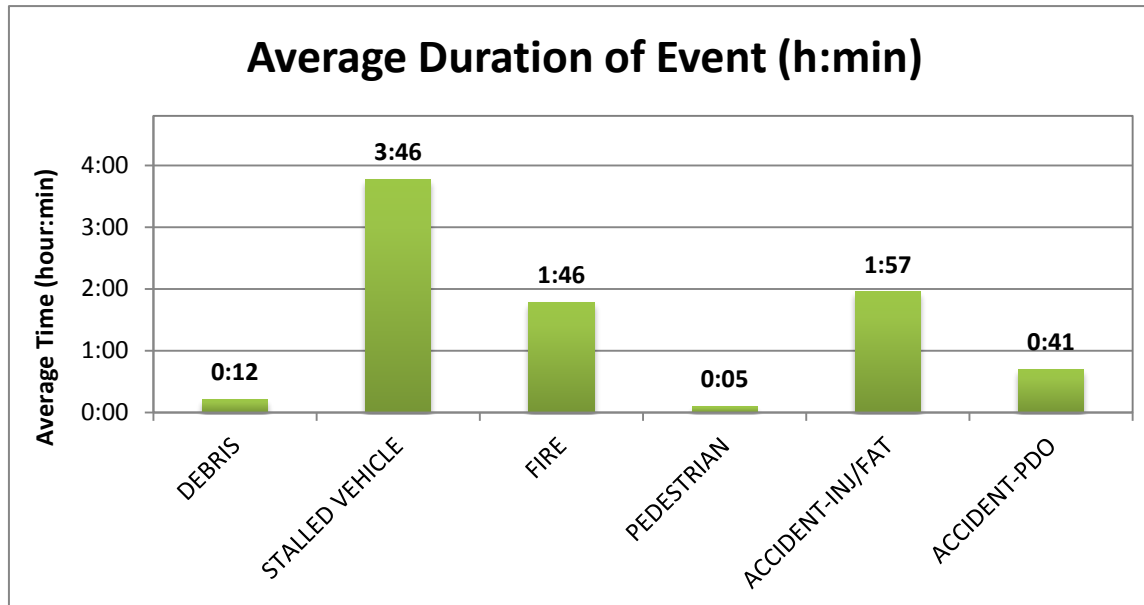


Figure 3: Average Duration of Incident by type for the month of July. Construction and tow events excluded for clarity.

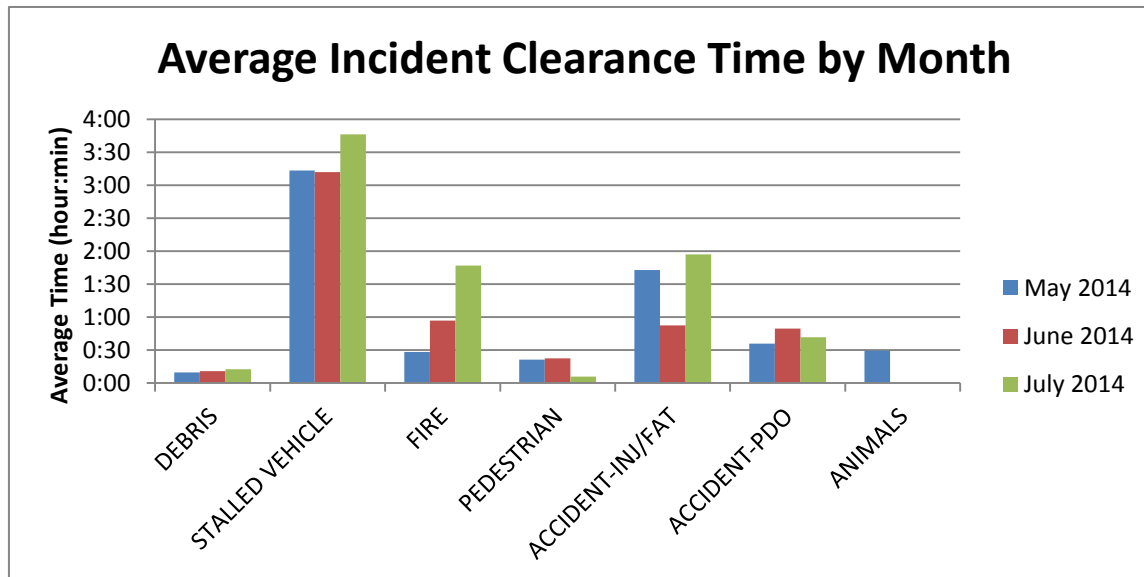


Figure 4: Average Incident Clearance time by type for the last 3 months. Construction and tow events excluded for clarity.