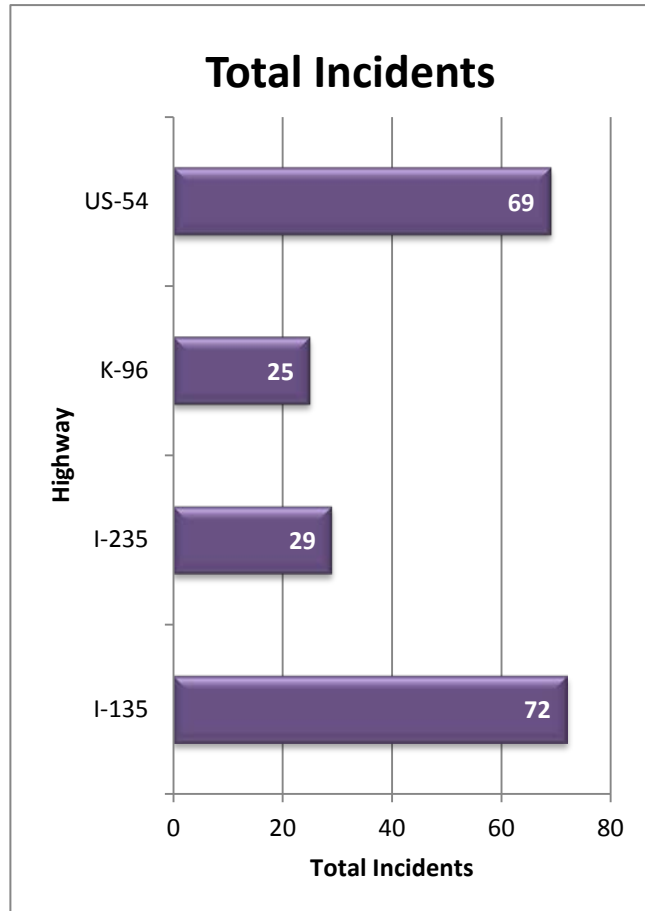
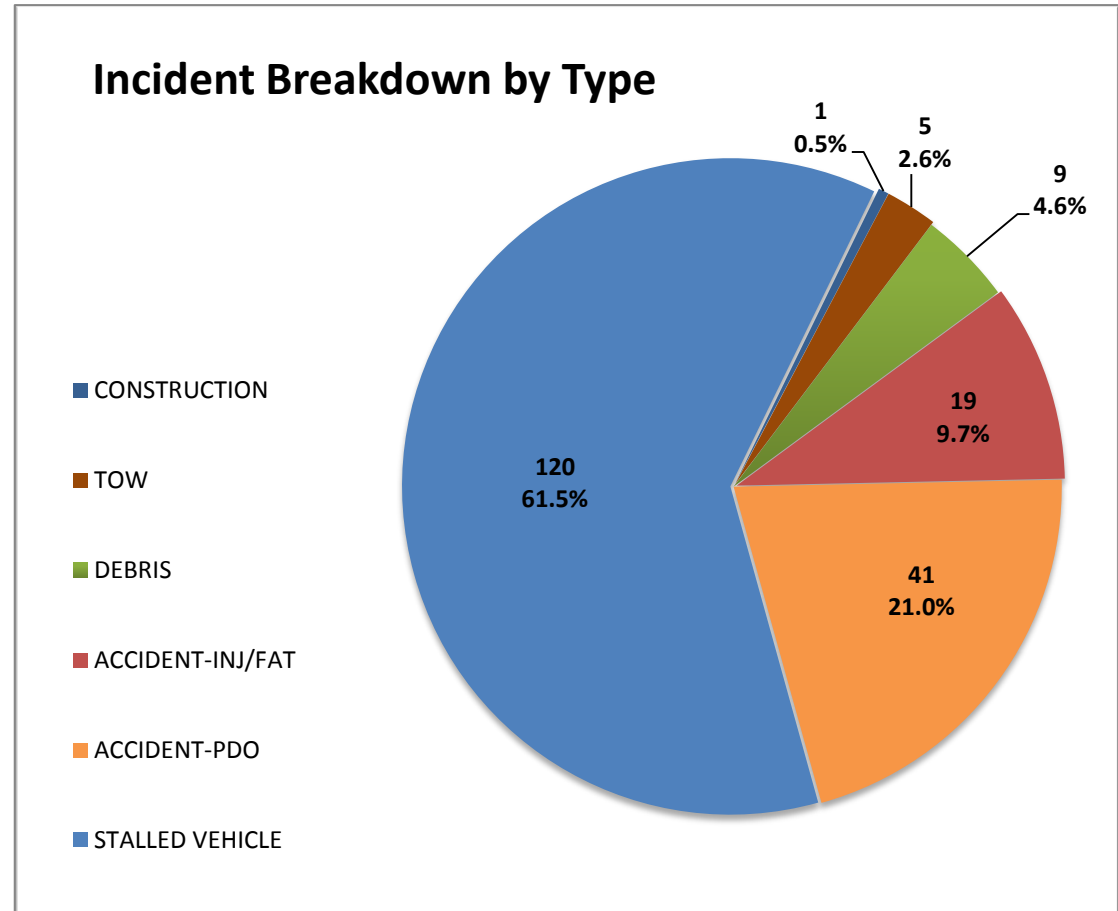


## Wichita TMC Support- Monthly Incident Report for August 2014

There were a total of **195** actively logged incidents during the normal TMC staffed hours of 6am to 7pm, Monday-Friday. Below is a breakdown of active incident type as well as average duration of incident by type. Incidents are only reported where TMC system coverage is available for verification.

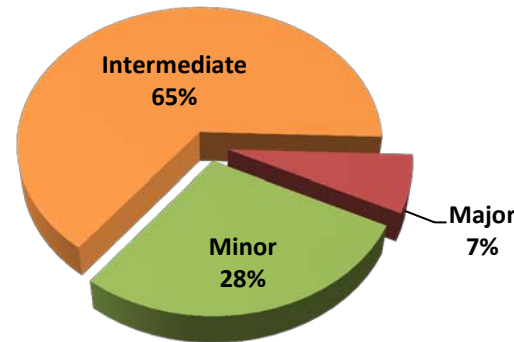


**Figure 1: Total incidents by Highway**



**Figure 2: Number and percentage of actively logged incidents in MIST for the month of August broken out by type of incident.**

## Total Crashes by Severity



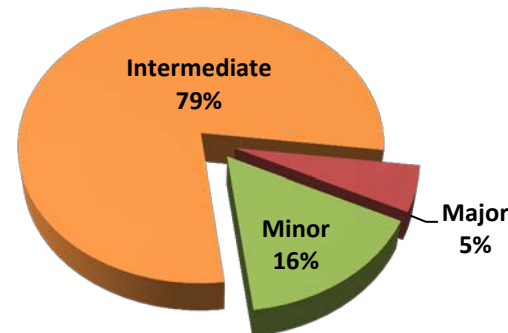
Severity	Total Crashes	Avg. Duration (hh:mm)
Minor	17	0:13
Intermediate	39	0:57
Major	4	2:56
<b>Grand Total</b>	<b>60</b>	<b>0:52</b>

### Incident vs. Crash

**Incident**- an event occurring on the highway that affects the safety or capacity of the highway

**Crash**- the collision of a vehicle with another vehicle, animal, pedestrian, debris or stationary object

## Injury/Fatality Crashes by Severity



Severity	Total Crashes	Avg. Duration (hh:mm)
Minor	3	0:13
Intermediate	15	0:58
Major	1	2:18
<b>Grand Total</b>	<b>19</b>	<b>0:55</b>

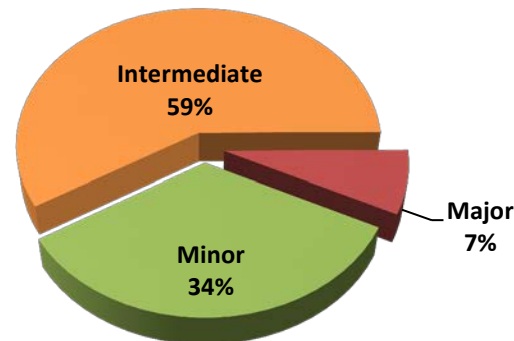
### Severity Levels

Minor- duration under 30 min.

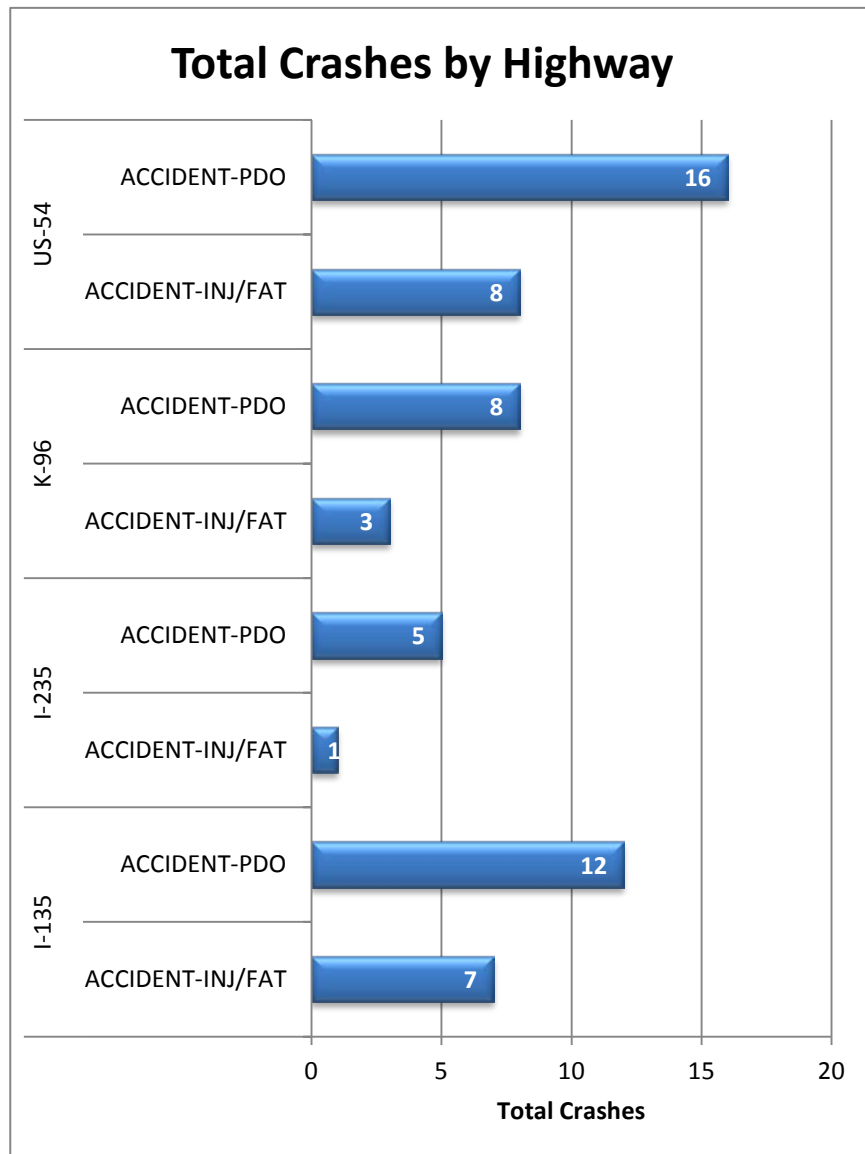
Intermediate- duration of 30 min. to 2 hrs.

Major – duration greater than 2 hrs.

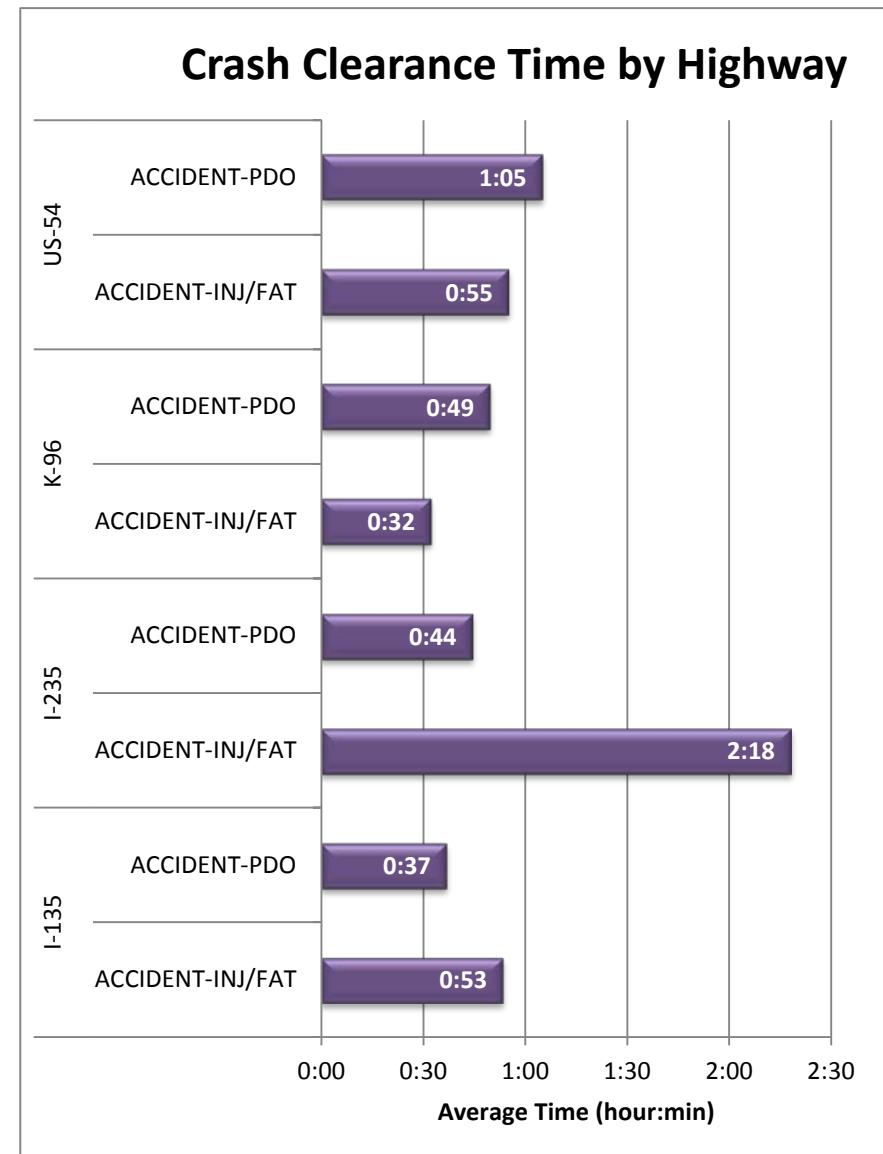
## Non-Injury Crashes by Severity



Severity	Total Crashes	Avg. Duration (hh:mm)
Minor	14	0:13
Intermediate	24	0:56
Major	3	3:09
<b>Grand Total</b>	<b>41</b>	<b>0:51</b>



**Figure 3: Total Crashes by Highway. Crashes are broken out by “Injury/Fatality” and “Property Damage Only”.**



**Figure 4: Average Crash Clearance Time by Highway. Crashes are broken out by “Injury/Fatality” and “Property Damage Only”.**

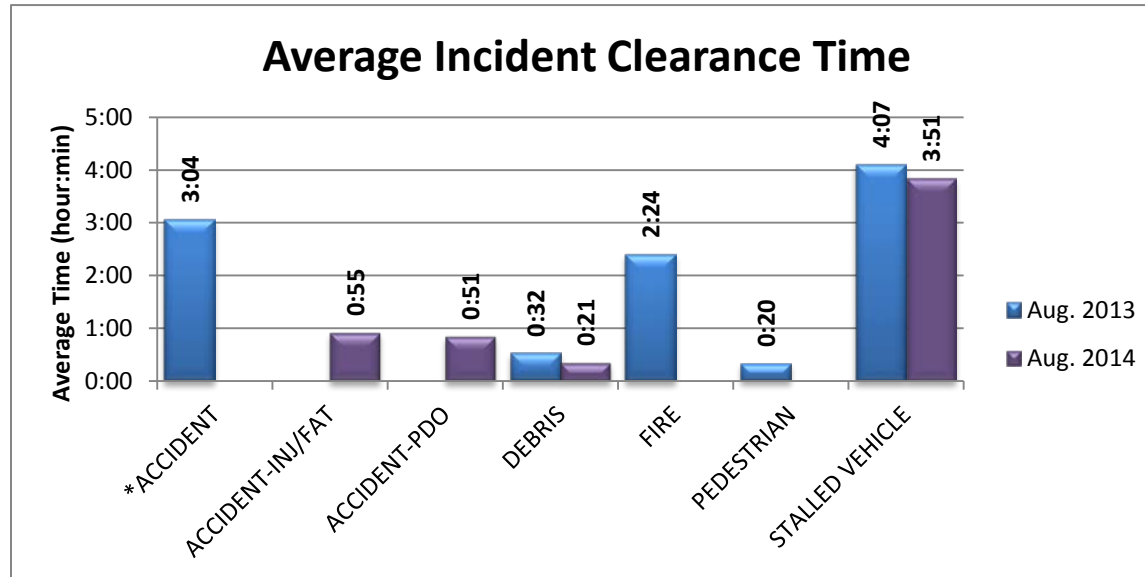


Figure 5: Average Incident Clearance time (2014 vs. 2013). Construction and tow events excluded for clarity.

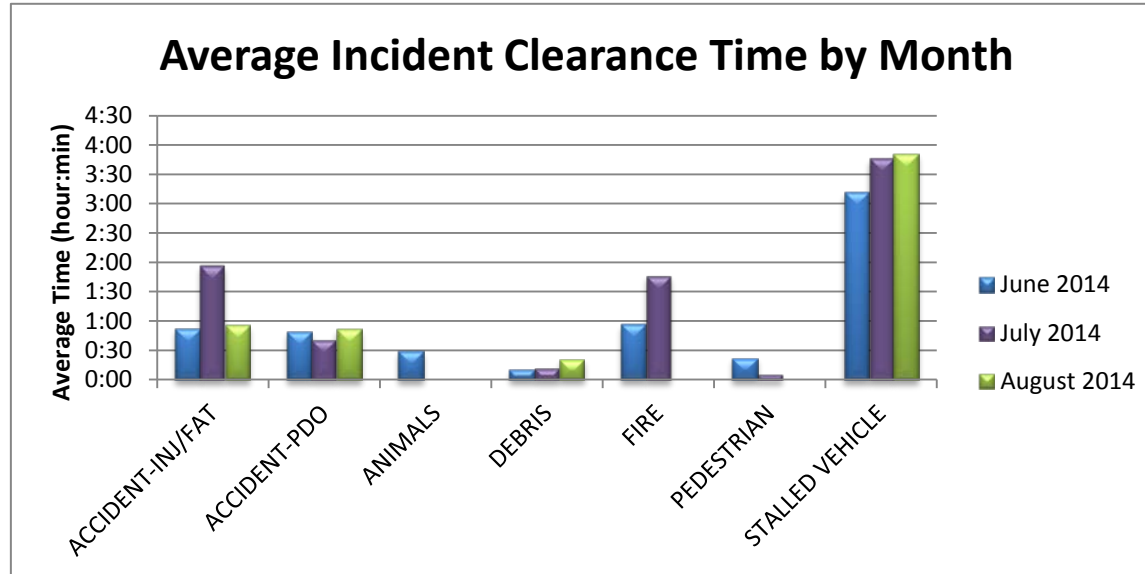


Figure 6: Average Incident Clearance time by type for the last 3 months. Construction and tow events excluded for clarity.