

## Wichita TMC Support- Monthly Incident Report for December 2014

There were a total of **175** actively logged incidents during the normal TMC staffed hours of 6am to 7pm, Monday-Friday. Below is a breakdown of active incident type as well as average duration of incident by type. Incidents are only reported where TMC system coverage is available for verification.

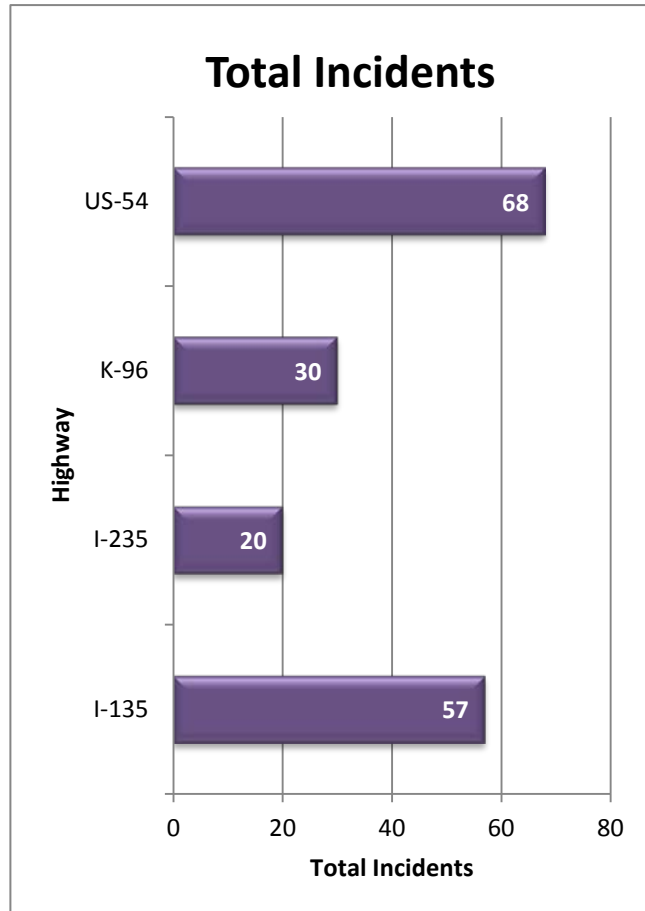


Figure 1: Total incidents by Highway

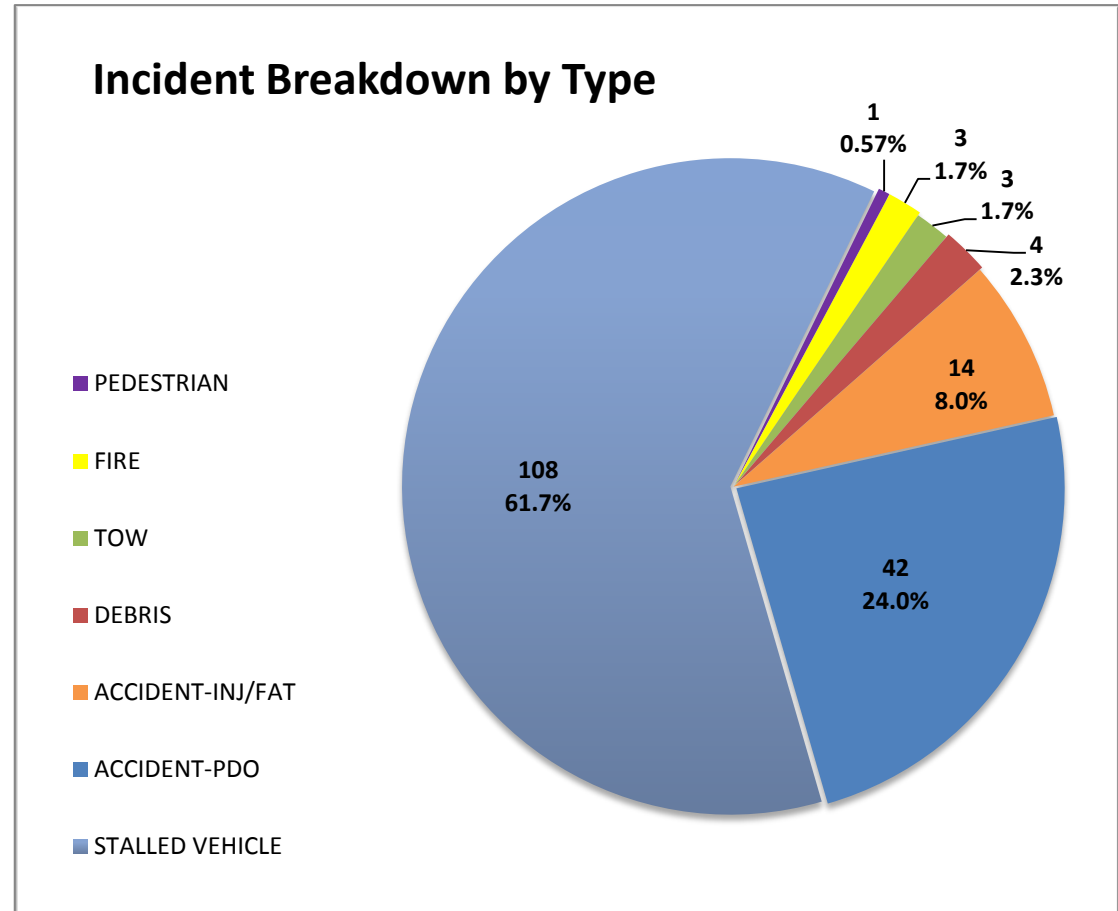
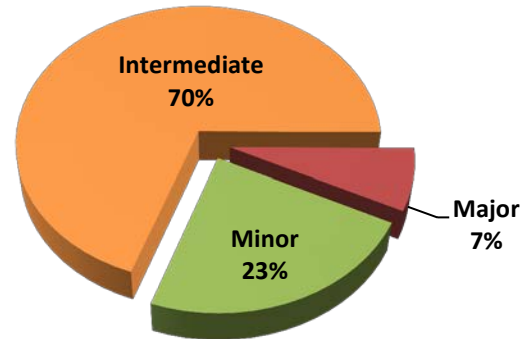


Figure 2: Number and percentage of actively logged incidents in MIST for the report month broken out by type of incident.

## Total Crashes by Severity



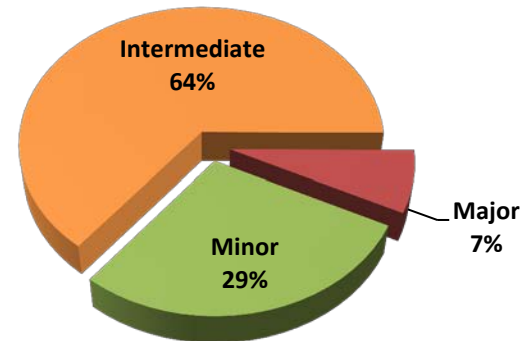
Severity	Total Crashes	Avg. Duration (hh:mm)
Minor	13	0:16
Intermediate	39	1:05
Major	4	2:46
<b>Grand Total</b>	<b>56</b>	<b>1:01</b>

### Incident vs. Crash

**Incident**- an event occurring on the highway that affects the safety or capacity of the highway

**Crash**- the collision of a vehicle with another vehicle, animal, pedestrian, debris or stationary object

## Injury/Fatality Crashes by Severity



Severity	Total Crashes	Avg. Duration (hh:mm)
Minor	4	0:19
Intermediate	9	1:16
Major	1	2:10
<b>Grand Total</b>	<b>14</b>	<b>1:03</b>

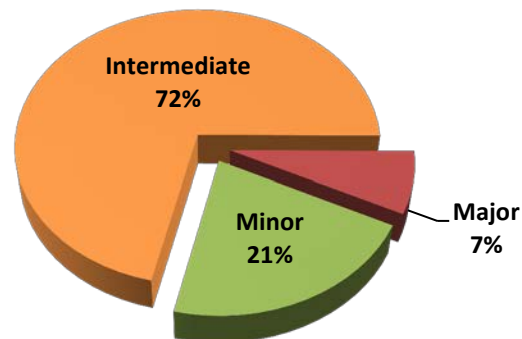
### Severity Levels

Minor- duration under 30 min.

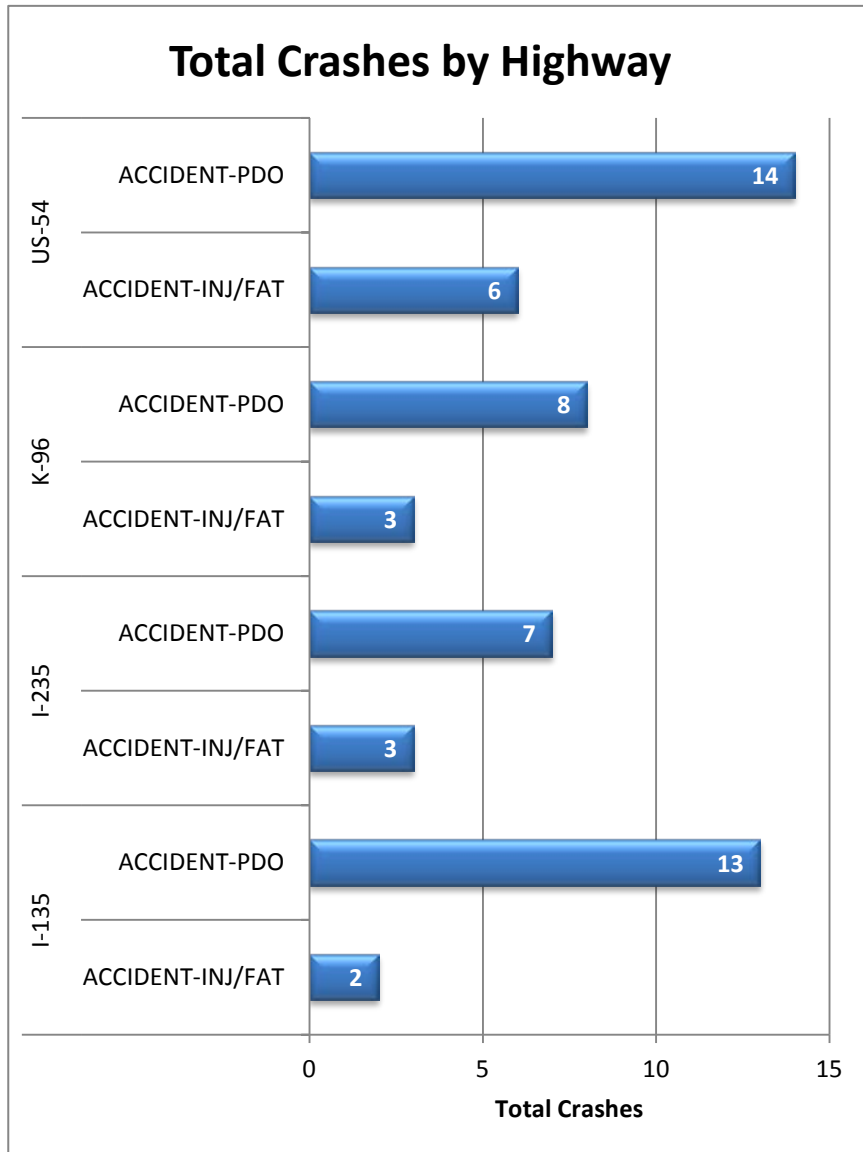
Intermediate- duration of 30 min. to 2 hrs.

Major – duration greater than 2 hrs.

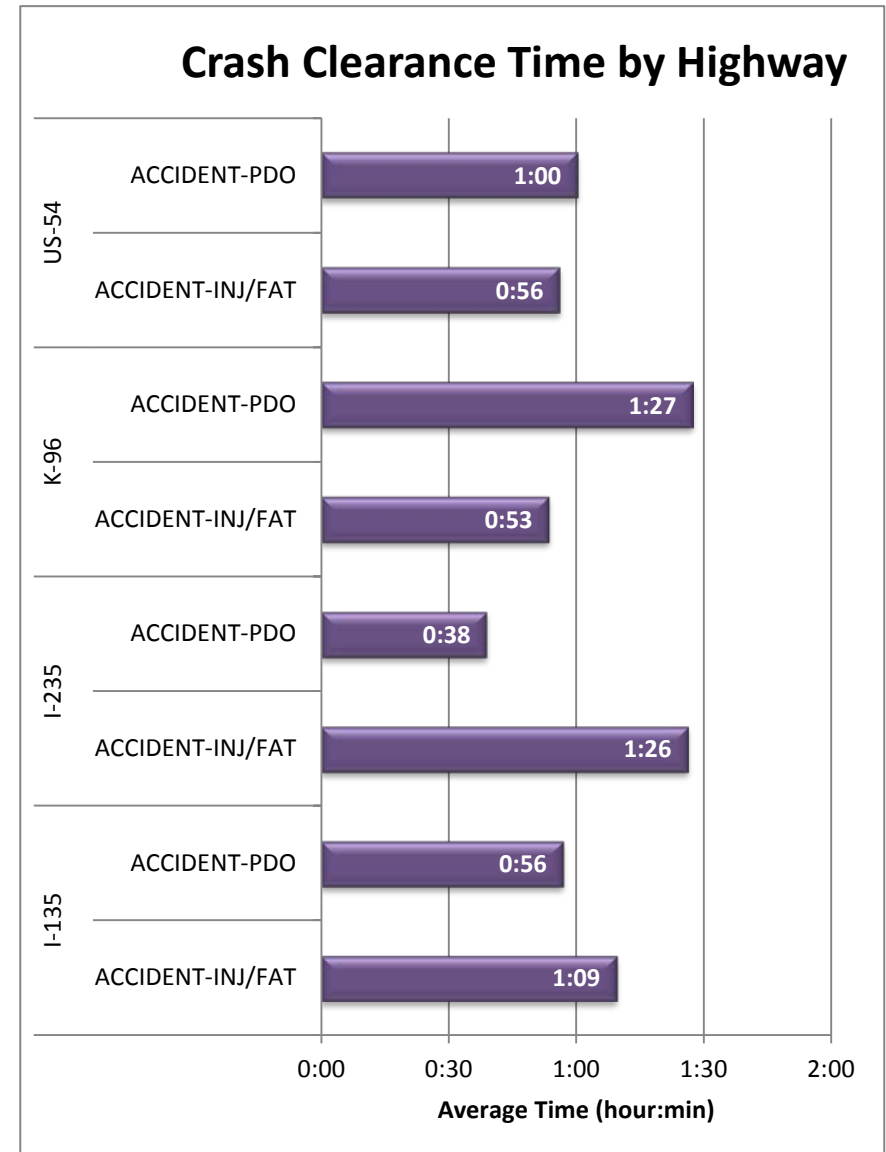
## Non-Injury Crashes by Severity



Severity	Total Crashes	Avg. Duration (hh:mm)
Minor	9	0:15
Intermediate	30	1:02
Major	3	2:58
<b>Grand Total</b>	<b>42</b>	<b>1:00</b>



**Figure 3: Total Crashes by Highway. Crashes are broken out by “Injury/Fatality” and “Property Damage Only”.**



**Figure 4: Average Crash Clearance Time by Highway. Crashes are broken out by “Injury/Fatality” and “Property Damage Only”.**

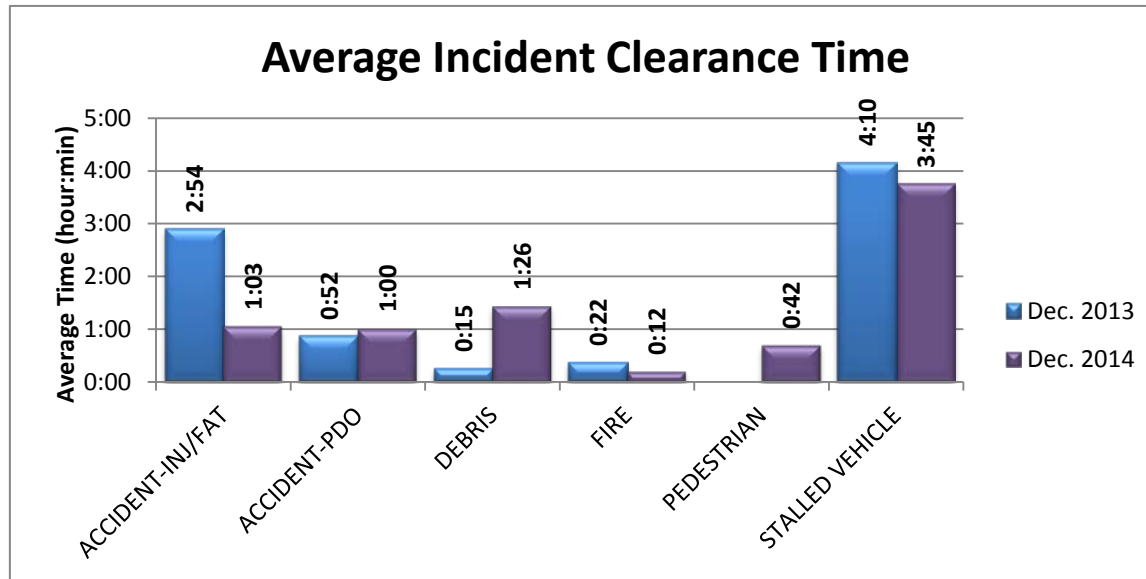


Figure 5: Average Incident Clearance time (2014 vs. 2013). Construction and tow events excluded for clarity.

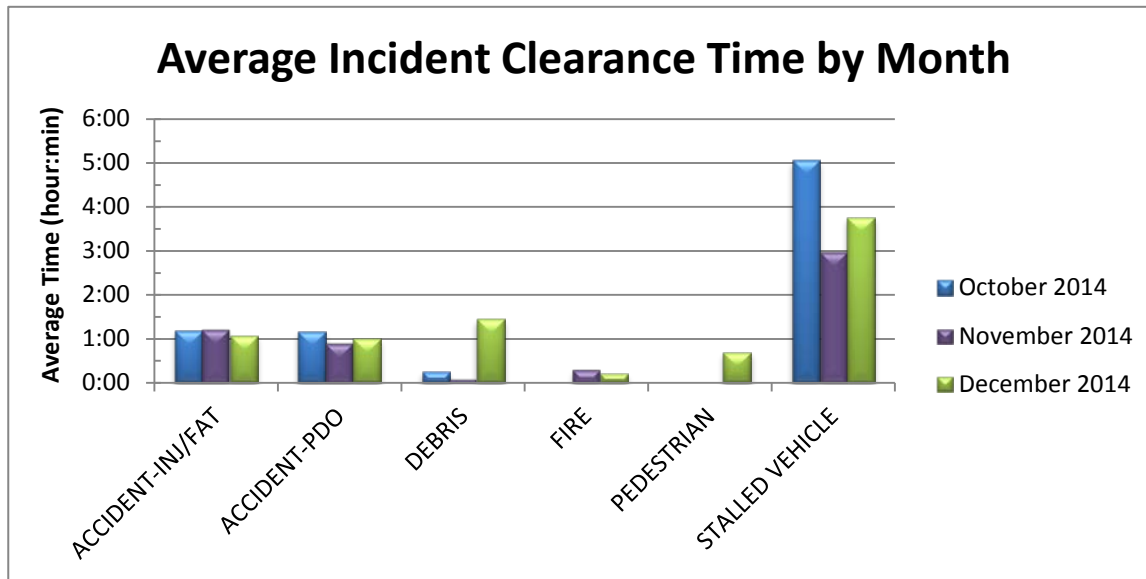


Figure 6: Average Incident Clearance time by type for the last 3 months. Construction and tow events excluded for clarity.