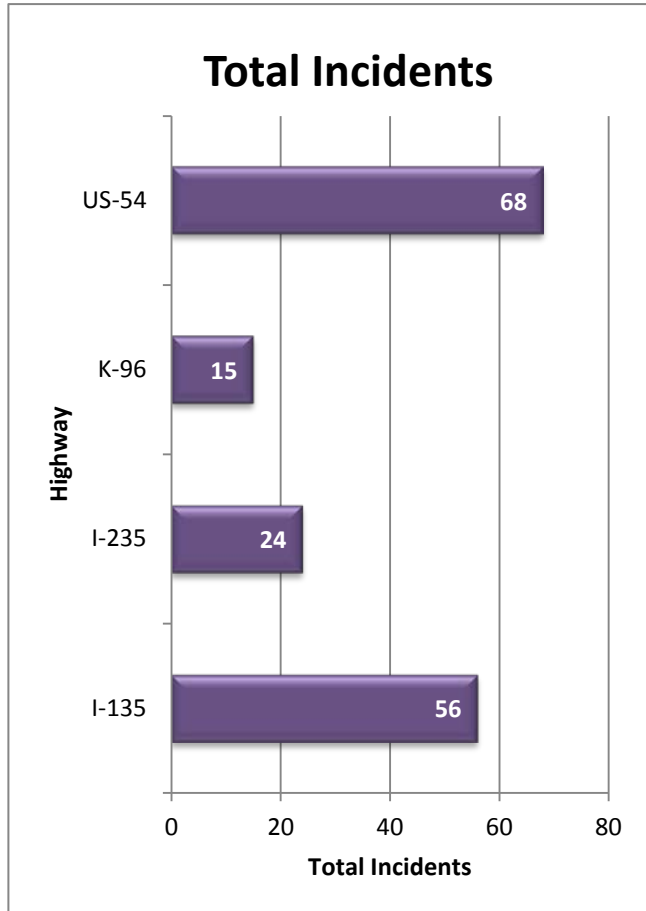
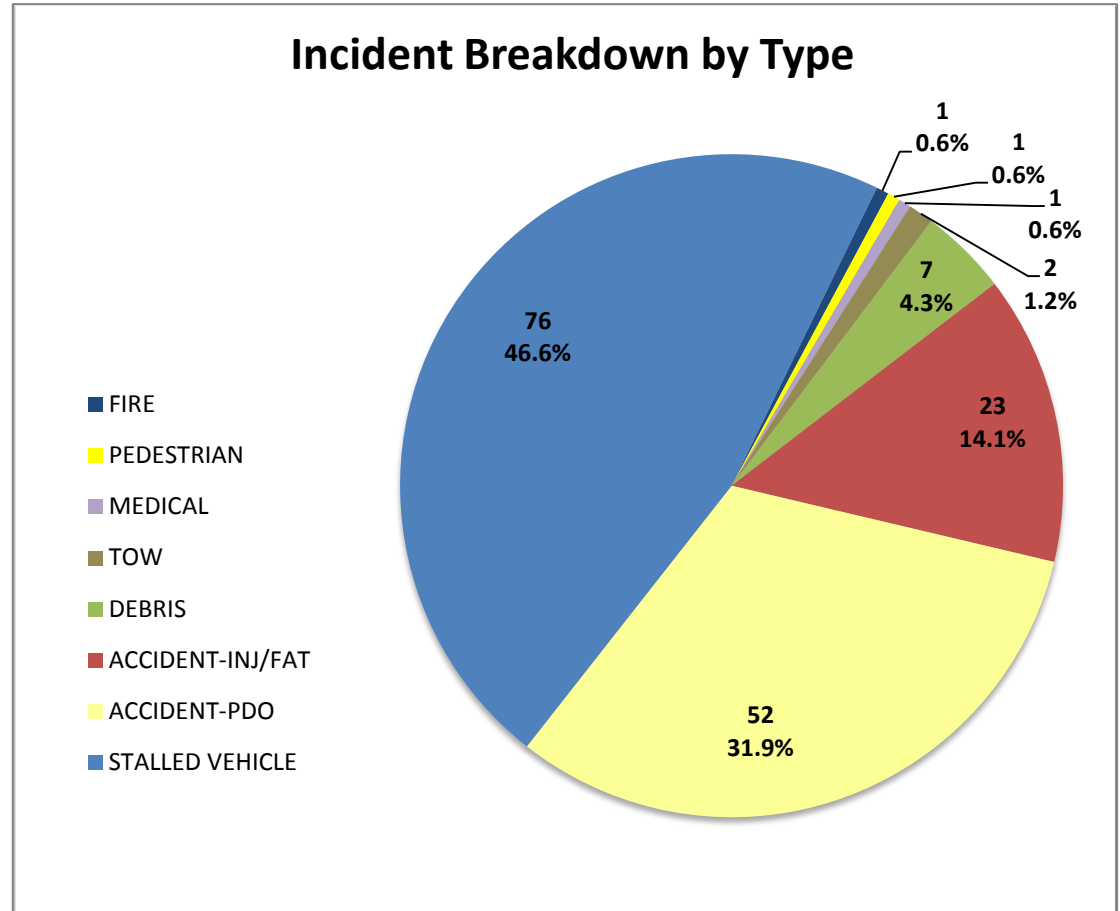


## Wichita TMC Support- Monthly Incident Report for November 2015

There were a total of **163** actively logged incidents during the month. The Traffic Management Center (TMC) is actively staffed 6am to 7pm, Monday-Friday, but additional incidents may be recorded outside normal hours. Below is a breakdown of active incident type as well as average duration of incident by type. Incidents are only reported where TMC system coverage is available for verification.

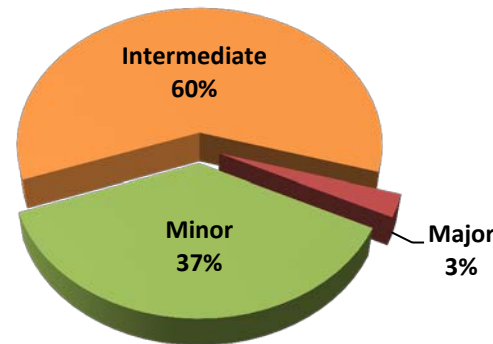


**Figure 1: Total incidents by Highway**



**Figure 2: Number and percentage of actively logged incidents in MIST for the report month broken out by type of incident.**

## Total Crashes by Severity



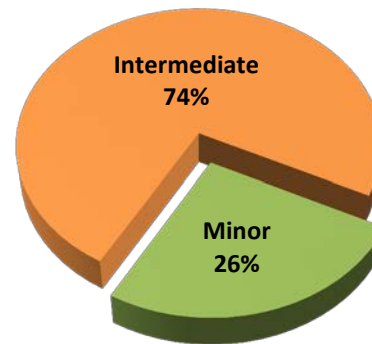
Severity	Total Crashes	Avg. Duration (hh:mm)
Minor	28	0:13
Intermediate	45	0:59
Major	2	2:19
<b>Grand Total</b>	<b>75</b>	<b>0:44</b>

### Incident vs. Crash

**Incident**- an event occurring on the highway that affects the safety or capacity of the highway

**Crash**- the collision of a vehicle with another vehicle, animal, pedestrian, debris or stationary object

## Injury/Fatality Crashes by Severity



Severity	Total Crashes	Avg. Duration (hh:mm)
Minor	6	0:09
Intermediate	17	1:00
<b>Grand Total</b>	<b>23</b>	<b>0:47</b>

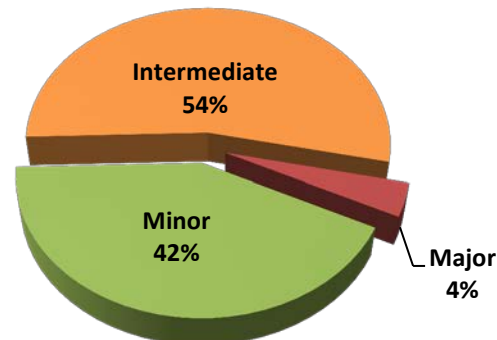
### Severity Levels

Minor- duration under 30 min.

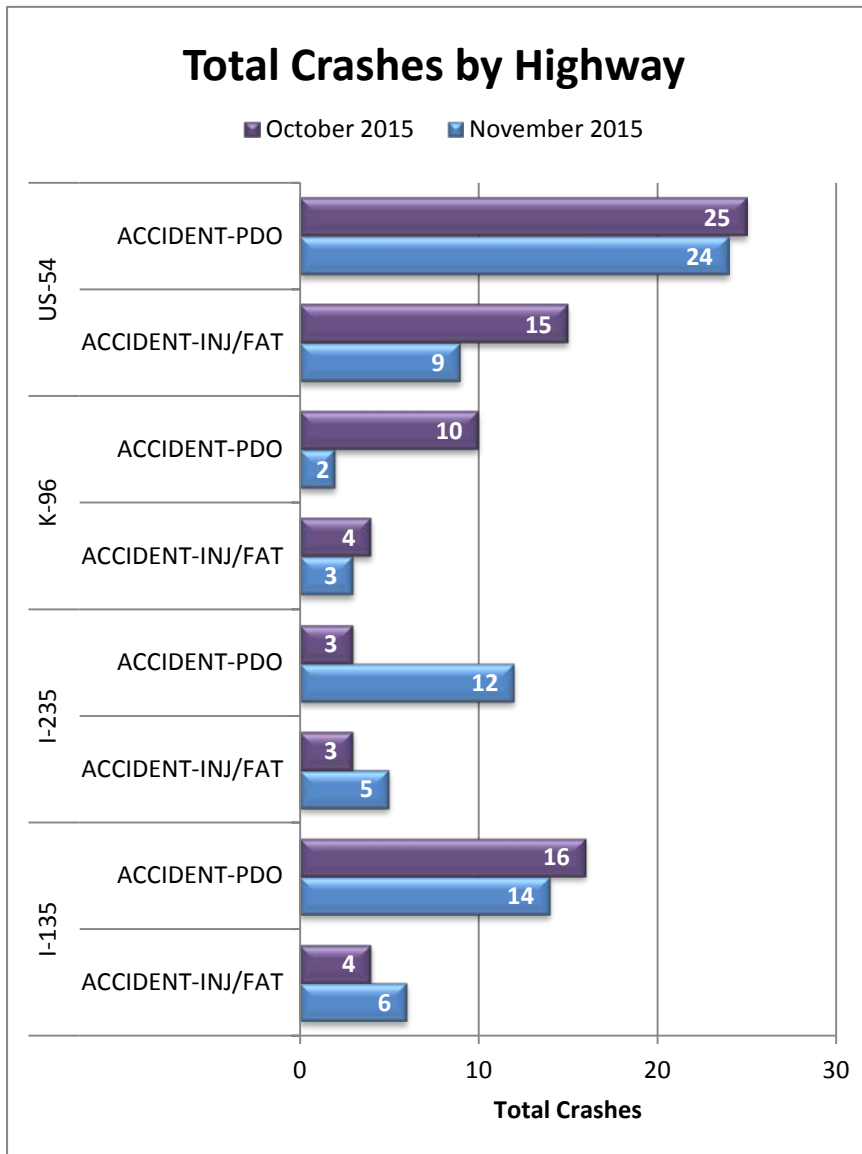
Intermediate- duration of 30 min. to 2 hrs.

Major – duration greater than 2 hrs.

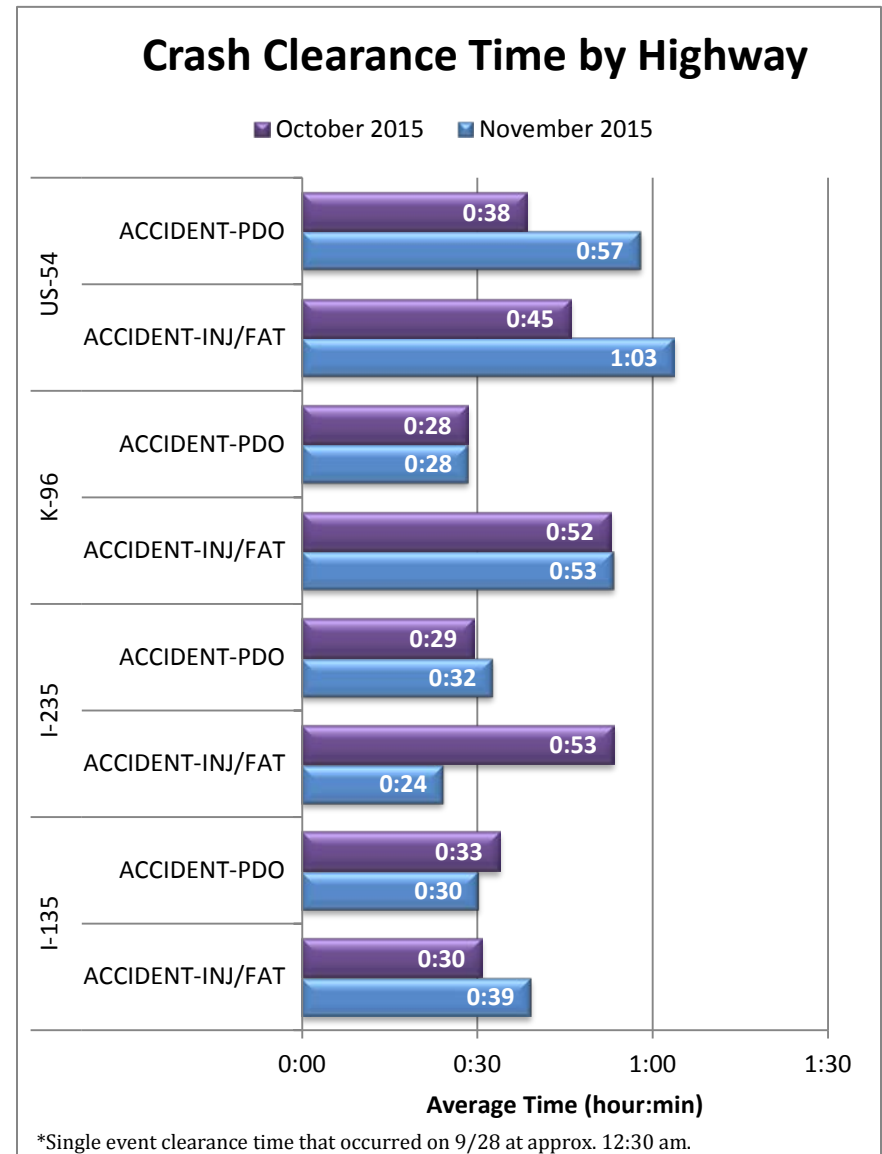
## Non-Injury Crashes by Severity



Severity	Total Crashes	Avg. Duration (hh:mm)
Minor	22	0:14
Intermediate	28	0:59
Major	2	2:19
<b>Grand Total</b>	<b>52</b>	<b>0:43</b>



**Figure 3: Total Crashes by Highway. Crashes are broken out by “Injury/Fatality” and “Property Damage Only”.**



**Figure 4: Average Crash Clearance Time by Highway. Crashes are broken out by “Injury/Fatality” and “Property Damage Only”.**

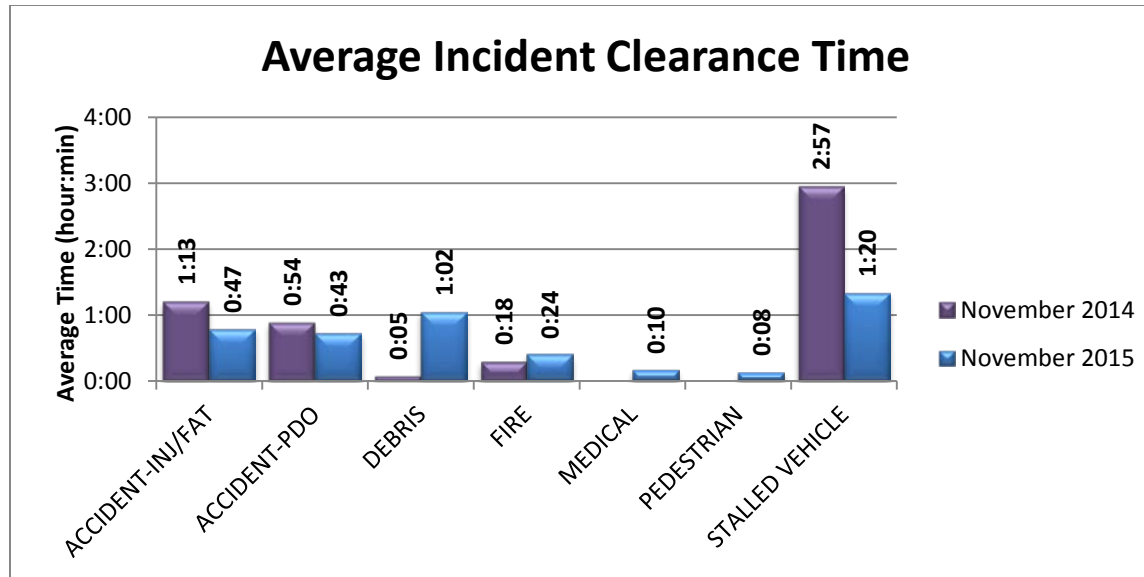


Figure 5: Average Incident Clearance time (2015 vs. 2014). Construction and tow events excluded for clarity.

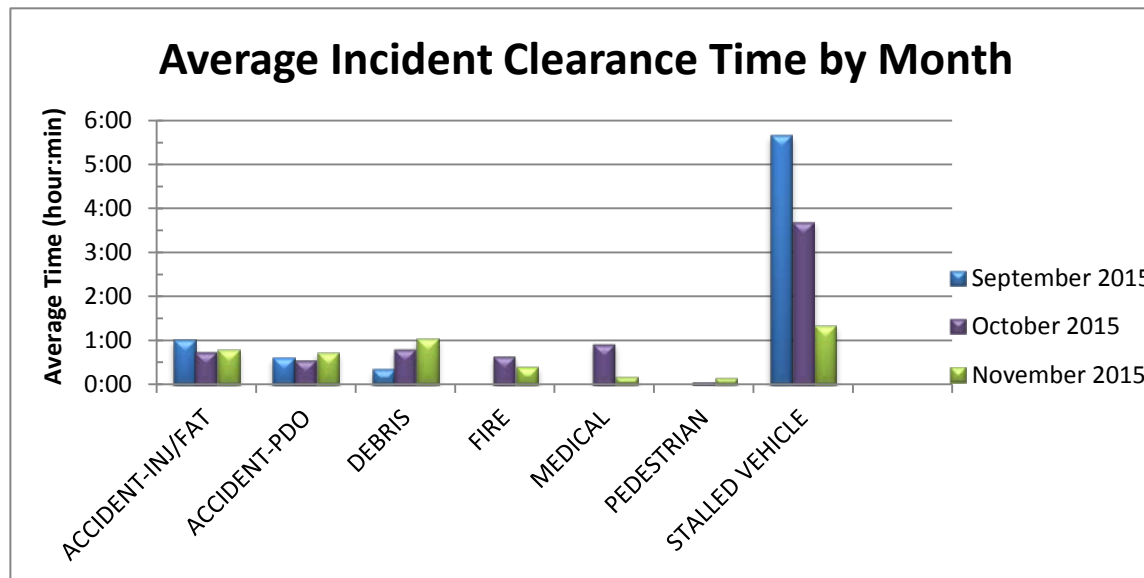


Figure 6: Average Incident Clearance time by type for the last 3 months. Construction and tow events excluded for clarity.