

## Wichita TMC Support- Monthly Incident Report for September 2016

There were a total of 199 actively logged incidents during the month. The Traffic Management Center (TMC) is actively staffed 6am to 7pm, Monday-Friday, but additional incidents September be recorded outside normal hours. Below is a breakdown of active incident type as well as average duration of incident by type. Incidents are only reported where TMC system coverage is available for verification.

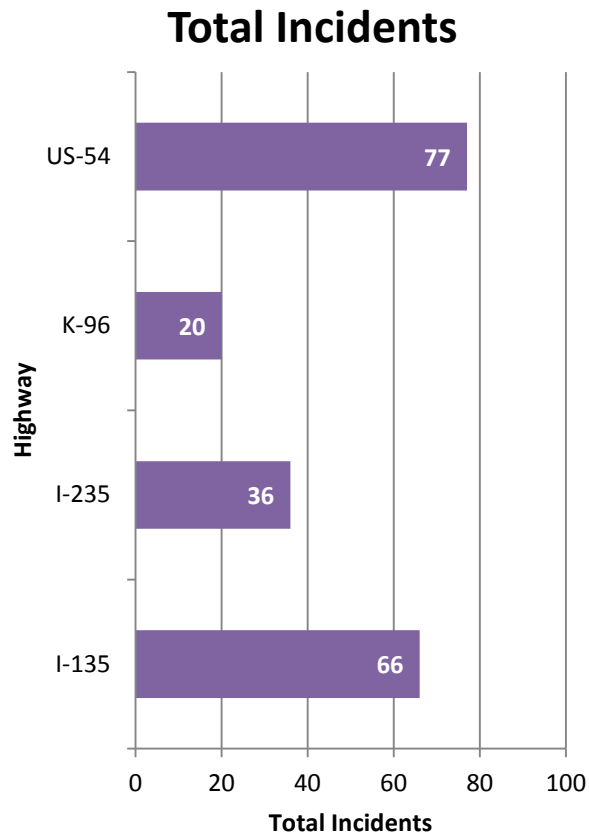


Figure 1: Total incidents by Highway

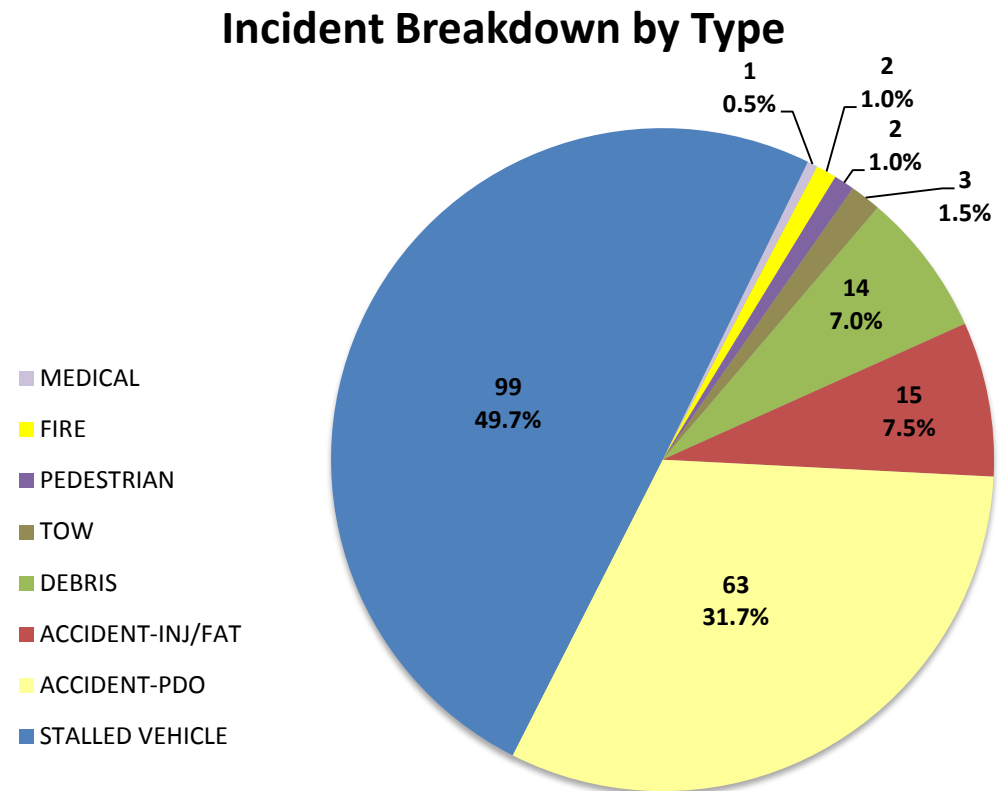
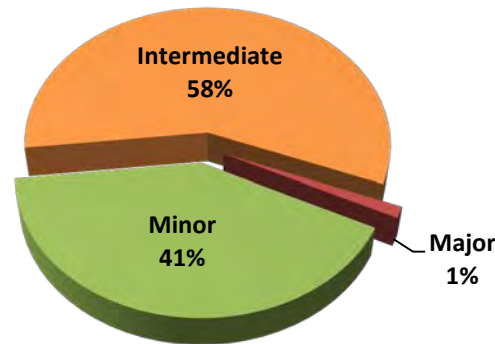


Figure 2: Number and percentage of actively logged incidents in MIST for the report month broken out by type of incident.

## Total Crashes by Severity



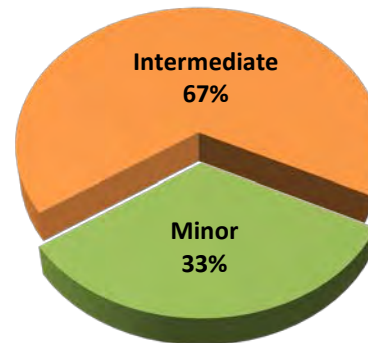
Severity	Total Crashes	Avg. Duration (hh:mm)
Minor	32	0:16
Intermediate	45	0:58
Major	1	2:02
<b>Grand Total</b>	<b>78</b>	<b>0:42</b>

### Incident vs. Crash

**Incident** – an event occurring on the highway that affects the safety or capacity of the highway

**Crash** – the collision of a vehicle with another vehicle, animal, pedestrian, debris or stationary object

## Injury/Fatality Crashes by Severity



Severity	Total Crashes	Avg. Duration (hh:mm)
Minor	5	0:18
Intermediate	10	0:59
<b>Grand Total</b>	<b>15</b>	<b>0:45</b>

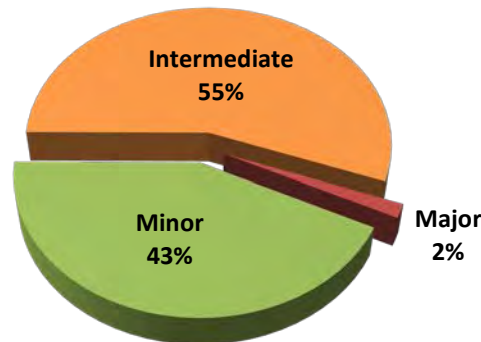
### Severity Levels

**Minor** – duration under 30 min.

**Intermediate** – duration of 30 min. to 2 hrs.

**Major** – duration greater than 2 hrs.

## Non-Injury Crashes by Severity



Severity	Total Crashes	Avg. Duration (hh:mm)
Minor	27	0:16
Intermediate	35	0:58
Major	1	2:02
<b>Grand Total</b>	<b>63</b>	<b>0:41</b>

09/02/16 WB US-54 at West St. Crash moved to shoulder and worked. (2:02)

### Total Crashes by Highway

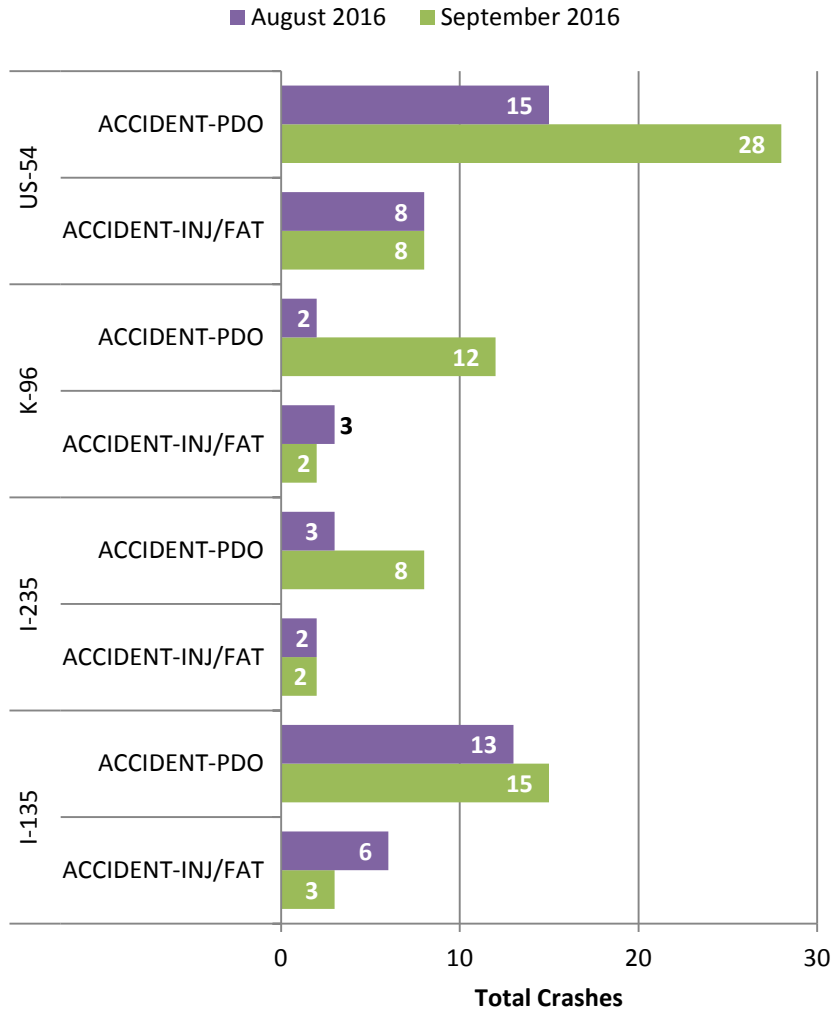


Figure 3: Total Crashes by Highway. Crashes are broken out by "Injury/Fatality" and "Property Damage Only".

### Crash Clearance Time by Highway

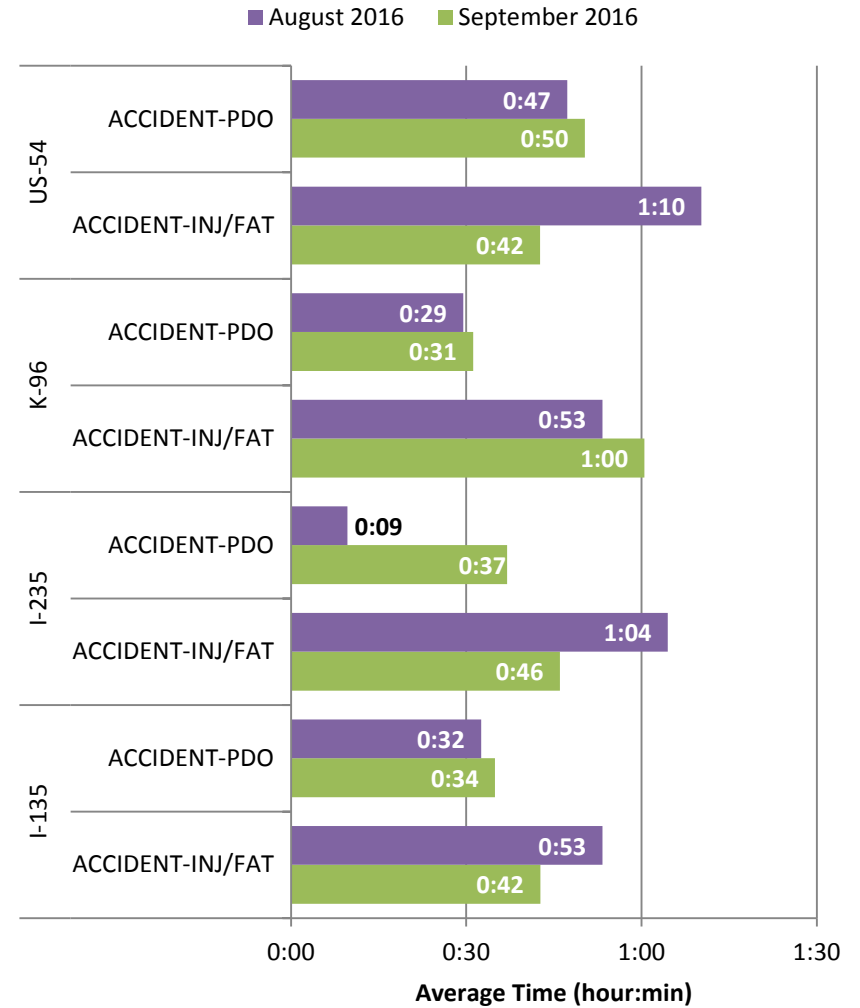
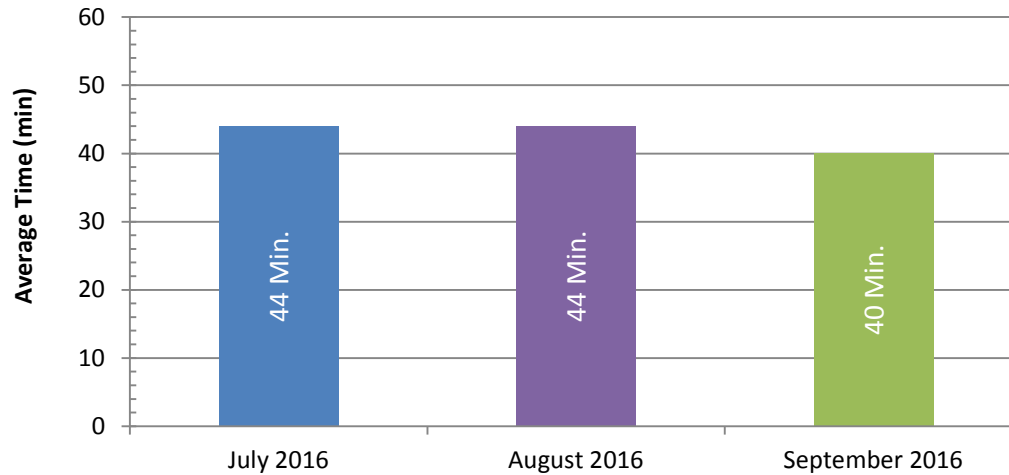


Figure 4: Average Crash Clearance Time by Highway. Crashes are broken out by "Injury/Fatality" and "Property Damage Only".

### Average Incident Clearance Time by Month



In the month, a total of **9 secondary crashes** were reported. Secondary crashes comprised **11.5% of logged crashes**. Secondary crashes are additional crashes resulting from the original incident.  
*Last Month: 2 crashes, 4.2%*

Figure 5: Average Incident Clearance time for the last 3 months. Construction, stalled, and tow events excluded for clarity.

### Average Incident Clearance Time by Month

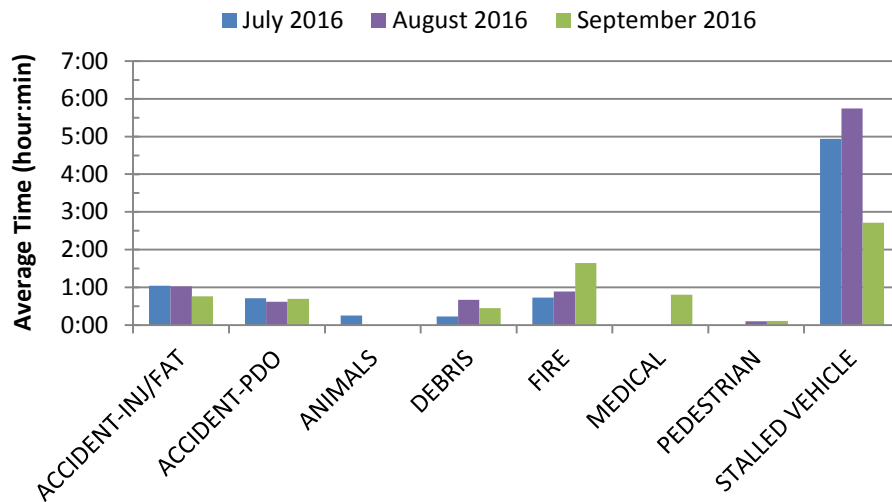


Figure 6: Average Incident Clearance time by type for the last 3 months. Construction and tow events excluded for clarity.

### Average Incident Clearance Time by Year

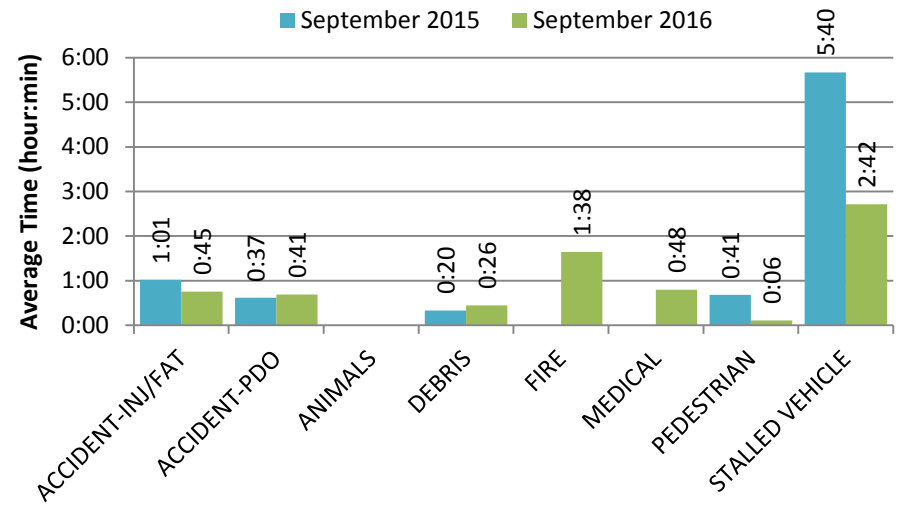


Figure 7: Average Incident Clearance time (2016 vs. 2015). Construction and tow events excluded for clarity.

### Posted DMS by Time of Day

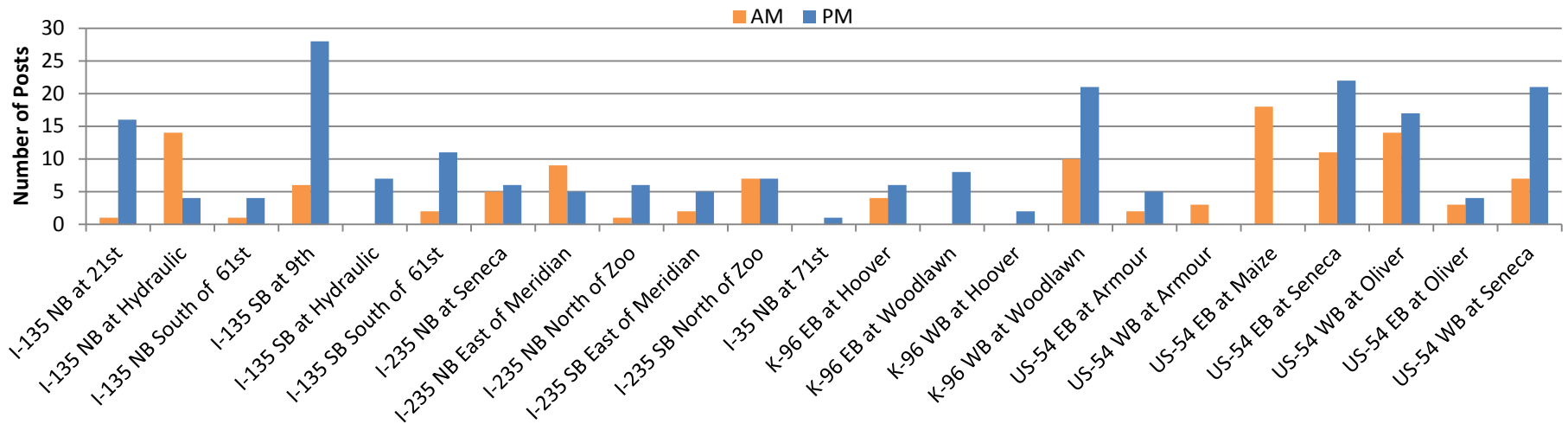


Figure 8: Number of posted messages per DMS by AM and PM hours.

### Posted Incidents by Type & Time of Day

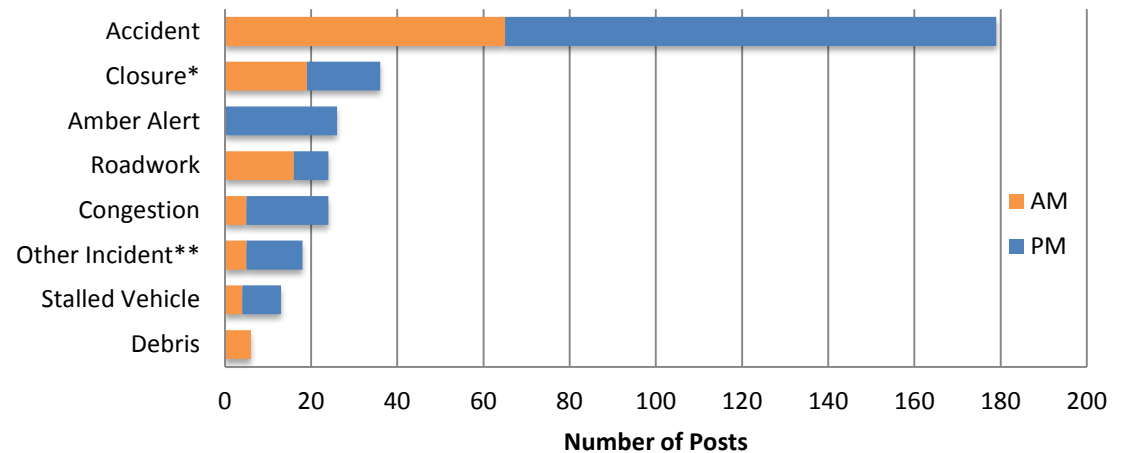


Figure 9: Posted incidents by type and AM/PM hours.

#### Dynamic Message Sign (DMS) Utilization

WICHway utilizes 23 permanent DMS. In the month, a total of **326 messages** were posted. **100%** of DMS were used at least once for an incident.

Messages shown exclude travel times and test messages. Messages shown include modifications to previous messages.

\*Closure messages include roadway closures for roadwork, incidents, and weather postings.

\*\*Other Incidents include but are not limited to stalled vehicles, fire, and medical incidents.