

Wichita TMC Support- Monthly Incident Report for June 2019

There were a total of **244** actively logged incidents during the month. The Traffic Management Center (TMC) is actively staffed 6am to 7pm, Monday-Friday, but additional incidents may be recorded outside normal hours. Below is a breakdown of active incident type as well as average duration of incident by type. Incidents are only reported where TMC system coverage is available for verification.

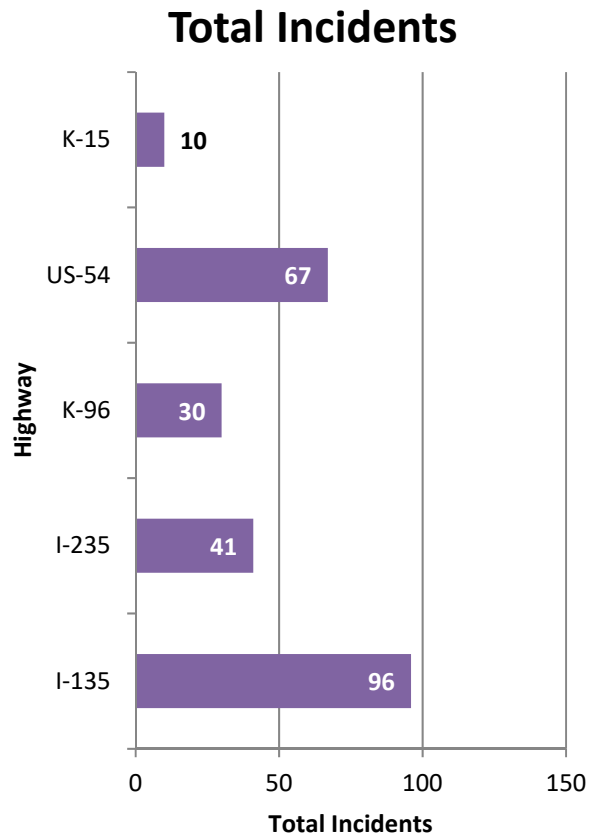


Figure 1: Total incidents by Highway

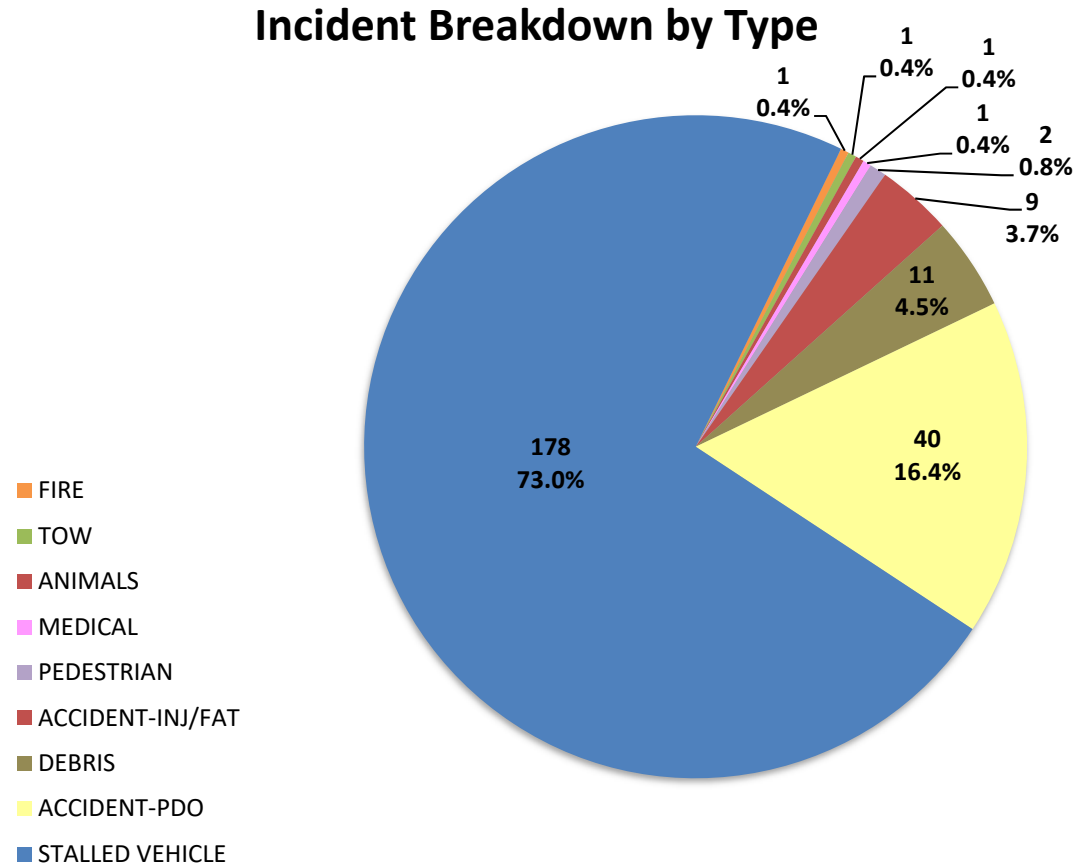
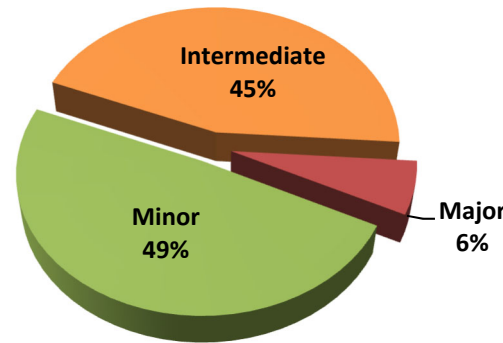


Figure 2: Number and percentage of actively logged incidents in MIST for the report month broken out by type of incident.

Total Crashes by Severity



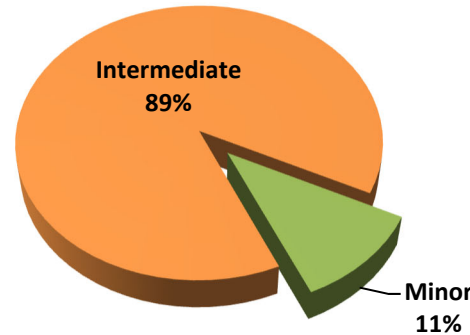
Severity	Total Crashes	Avg. Duration (hh:mm)
Minor	24	0:14
Intermediate	22	0:54
Major	3	2:19
Grand Total	49	0:40

Incident vs. Crash

Incident – an event occurring on the highway that affects the safety or capacity of the highway

Crash – the collision of a vehicle with another vehicle, animal, pedestrian, debris or stationary object

Injury/Fatality Crashes by Severity



Severity	Total Crashes	Avg. Duration (hh:mm)
Minor	1	0:22
Intermediate	8	0:42
Grand Total	9	0:40

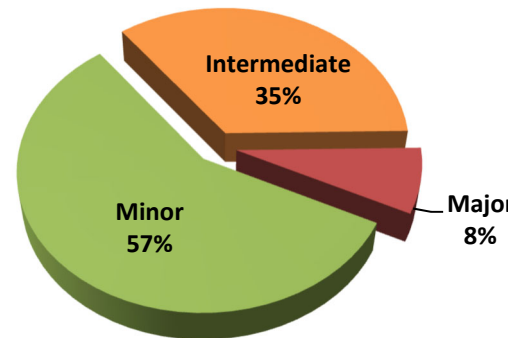
Severity Levels

Minor – duration under 30 min.

Intermediate – duration of 30 min. to 2 hrs.

Major – duration greater than 2 hrs.

Non-Injury Crashes by Severity



Severity	Total Crashes	Avg. Duration (hh:mm)
Minor	23	0:14
Intermediate	14	1:01
Major	3	2:19
Grand Total	40	0:40

06/06/19 NB K-15 at 63rd 1627 hrs (2:00)
 06/12/19 SB I-235 at US-54 1438 hrs (2:23)
 06/12/19 EB US-54 at Washington hrs (2:34)

Total Crashes by Highway

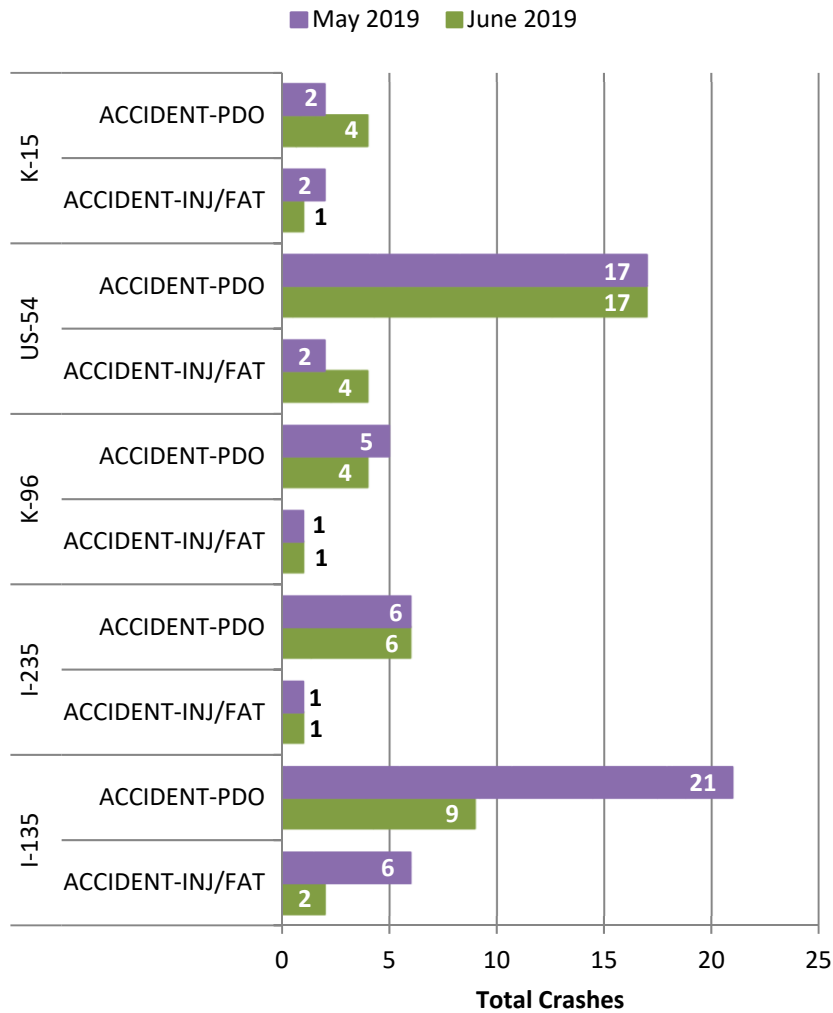


Figure 3: Total Crashes by Highway. Crashes are broken out by “Injury/Fatality” and “Property Damage Only”.

Crash Clearance Time by Highway

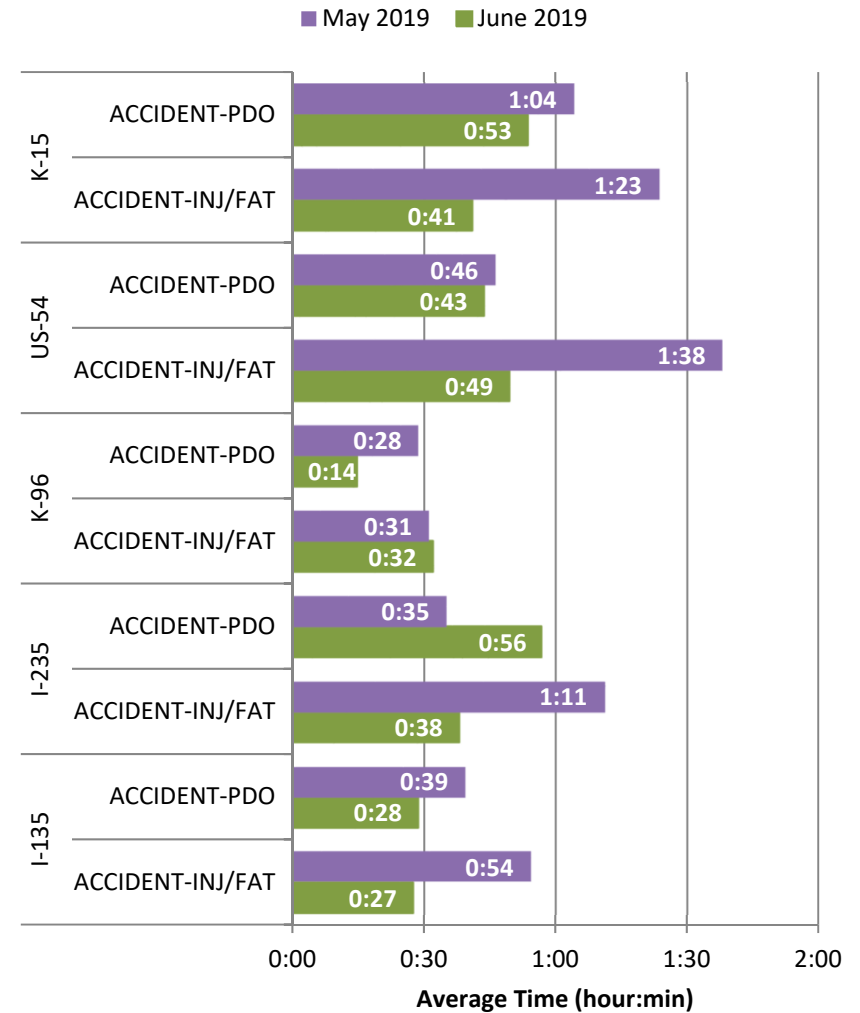
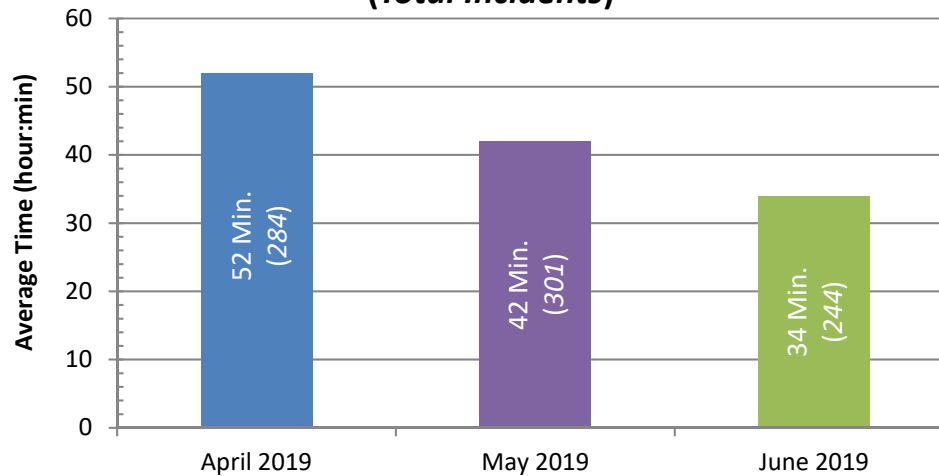


Figure 4: Average Crash Clearance Time by Highway. Crashes are broken out by “Injury/Fatality” and “Property Damage Only”.

Average Incident Clearance Time by Month (Total Incidents)



In the month, a total of **3 secondary crashes** were reported. Secondary crashes comprised **6.1% of logged crashes**. Secondary crashes are additional crashes resulting from the original incident.
Last Month: 3 crashes, 4.8%

Figure 5: Average Incident Clearance time for the last 3 months. Construction, stalled, and tow events excluded for clarity.

Average Incident Clearance Time by Month

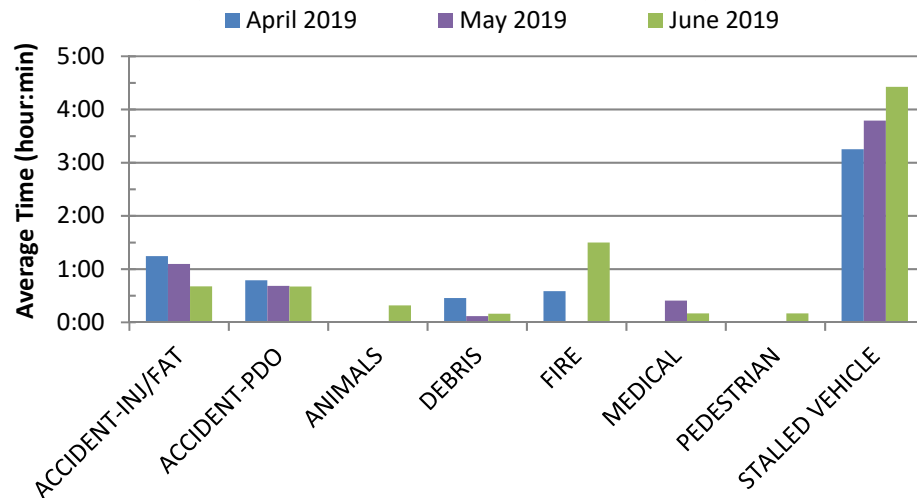


Figure 6: Average Incident Clearance time by type for the last 3 months. Construction and tow events excluded for clarity.

Average Incident Clearance Time by Year

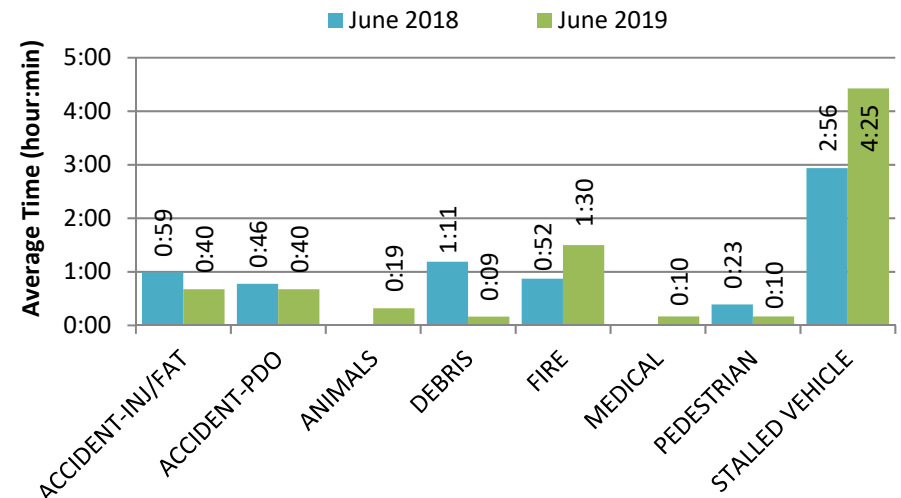


Figure 7: Average Incident Clearance time (2019 vs. 2018). Construction and tow events excluded for clarity.

Posted DMS by Time of Day

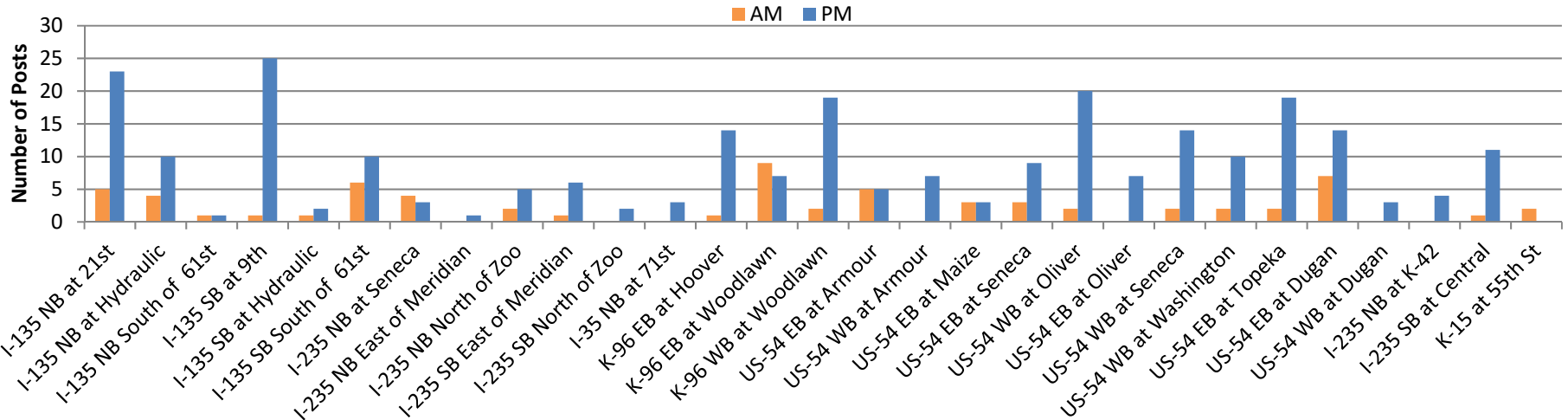


Figure 8: Number of posted messages per DMS by AM and PM hours.

Posted Incidents by Type & Time of Day

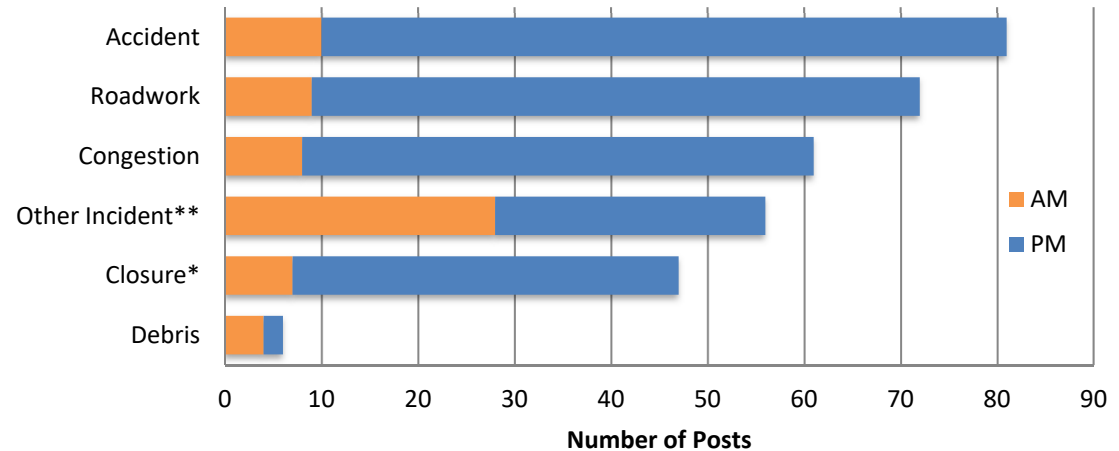


Figure 9: Posted incidents by type and AM/PM hours.

Dynamic Message Sign (DMS) Utilization

WICHway utilizes 30 permanent DMS. In the month, a total of **323 messages** were posted. **97%** of DMS were used at least once for an incident.

Messages shown exclude travel times and test messages. Messages shown include modifications to previous messages.

*Closure messages include roadway closures for roadwork, incidents, and weather postings.

**Other Incidents include but are not limited to stalled vehicles, fire, and medical incidents.