

Wichita TMC Support- Monthly Incident Report for September 2019

There were a total of **206** actively logged incidents during the month. The Traffic Management Center (TMC) is actively staffed 6am to 7pm, Monday-Friday, but additional incidents may be recorded outside normal hours. Below is a breakdown of active incident type as well as average duration of incident by type. Incidents are only reported where TMC system coverage is available for verification.

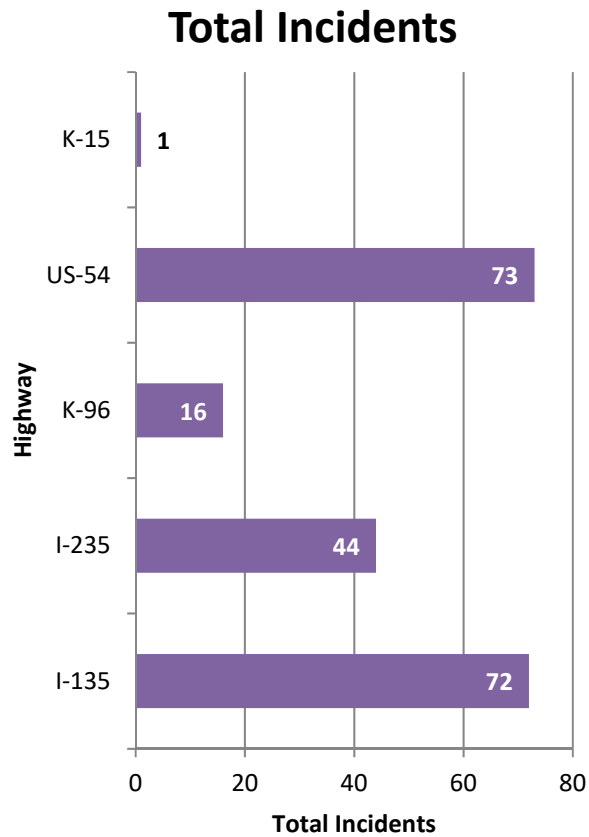


Figure 1: Total incidents by Highway

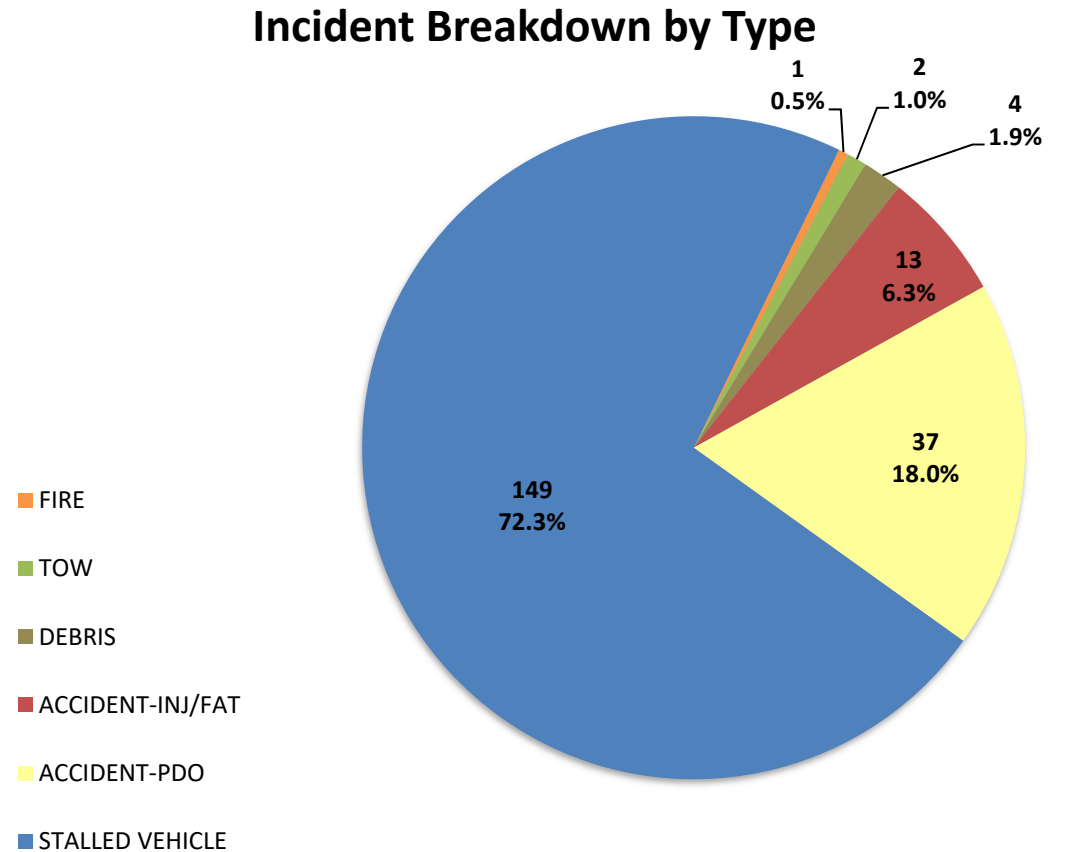
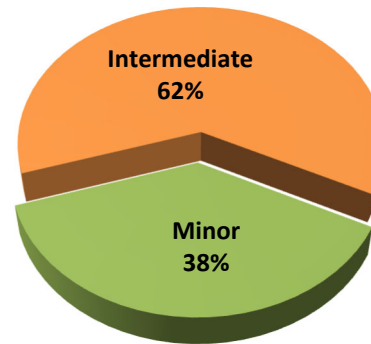


Figure 2: Number and percentage of actively logged incidents in MIST for the report month broken out by type of incident.

Total Crashes by Severity



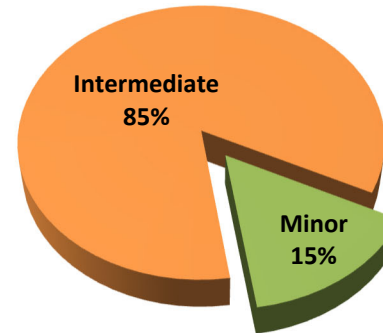
Severity	Total Crashes	Avg. Duration (hh:mm)
Minor	19	0:12
Intermediate	31	1:02
Grand Total	50	0:43

Incident vs. Crash

Incident – an event occurring on the highway that affects the safety or capacity of the highway

Crash – the collision of a vehicle with another vehicle, animal, pedestrian, debris or stationary object

Injury/Fatality Crashes by Severity



Severity	Total Crashes	Avg. Duration (hh:mm)
Minor	2	0:17
Intermediate	11	1:00
Grand Total	13	0:54

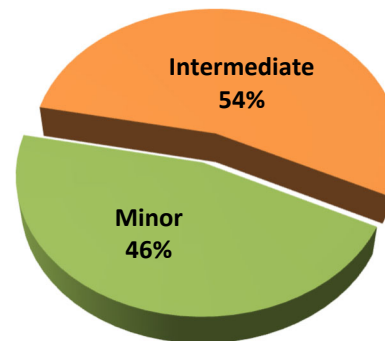
Severity Levels

Minor – duration under 30 min.

Intermediate – duration of 30 min. to 2 hrs.

Major – duration greater than 2 hrs.

Non-Injury Crashes by Severity



Severity	Total Crashes	Avg. Duration (hh:mm)
Minor	17	0:11
Intermediate	20	1:04
Grand Total	37	0:40

Total Crashes by Highway

August 2019 September 2019

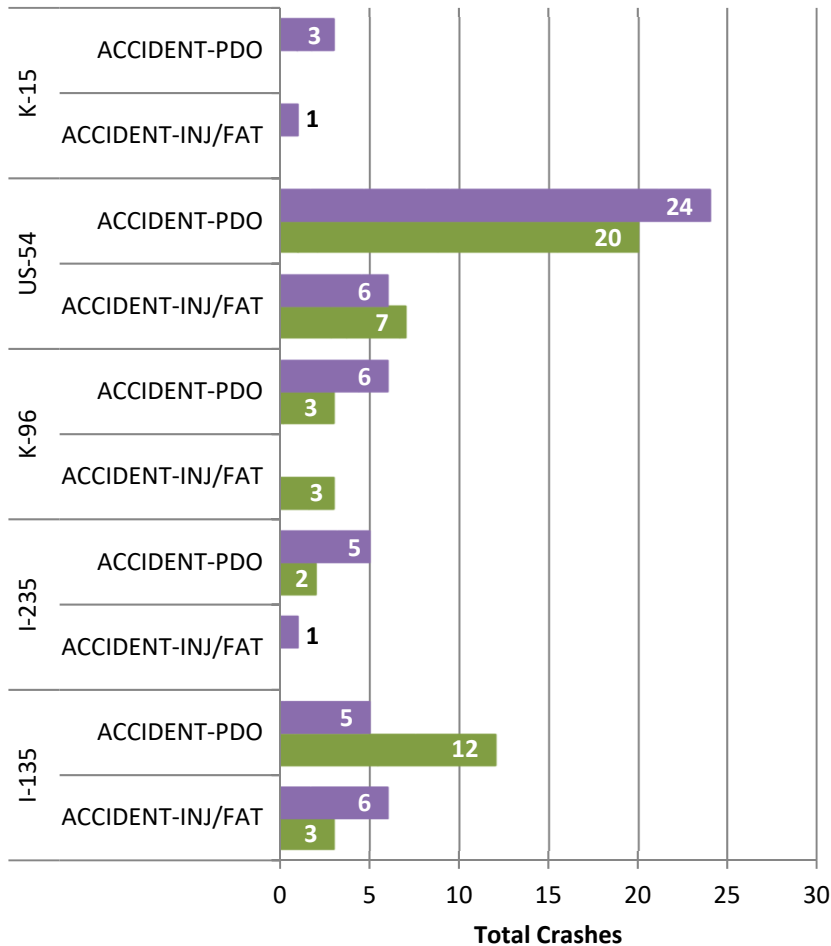


Figure 3: Total Crashes by Highway. Crashes are broken out by “Injury/Fatality” and “Property Damage Only”.

Crash Clearance Time by Highway

August 2019 September 2019

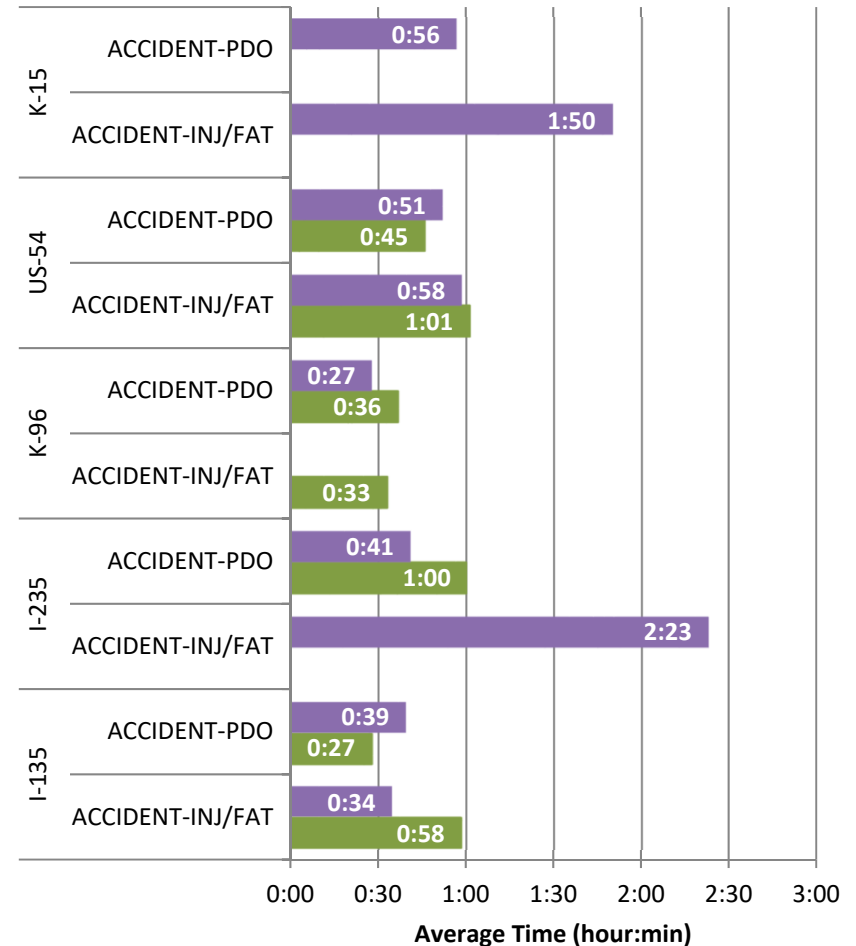
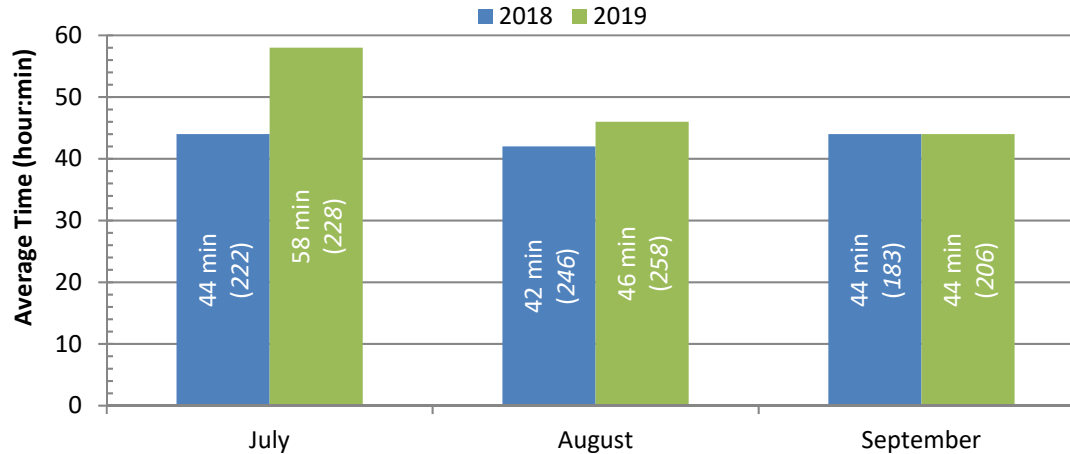


Figure 4: Average Crash Clearance Time by Highway. Crashes are broken out by “Injury/Fatality” and “Property Damage Only”.

Average Incident Clearance Time by Month (Total Incidents)



In the month, a total of **2 secondary crashes** were reported. Secondary crashes comprised **4.0% of logged crashes**. Secondary crashes are additional crashes resulting from the original incident.
Last Month: 3 crashes, 5.3%

Figure 5: Average Incident Clearance time for 2019 vs. 2018 (3 months). Construction, stalled, and tow events excluded for clarity.

Average Incident Clearance Time by Month

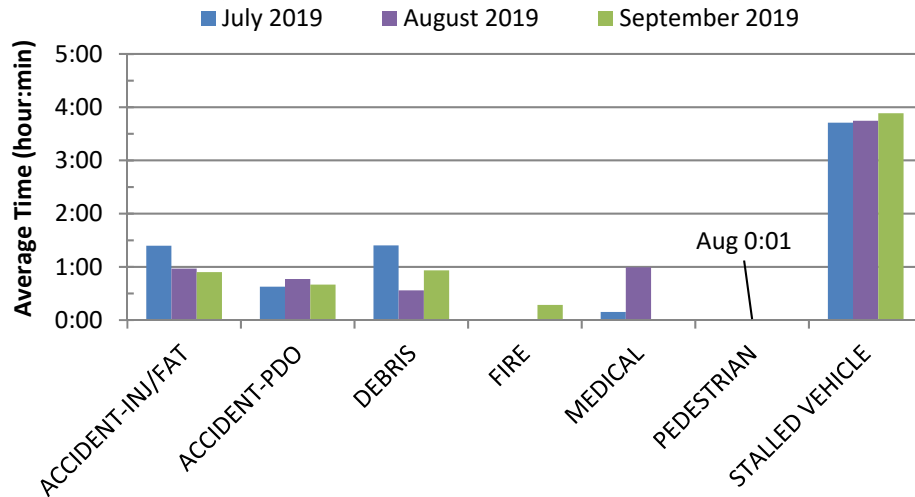


Figure 6: Average Incident Clearance time by type for the last 3 months. Construction and tow events excluded for clarity.

Average Incident Clearance Time by Year

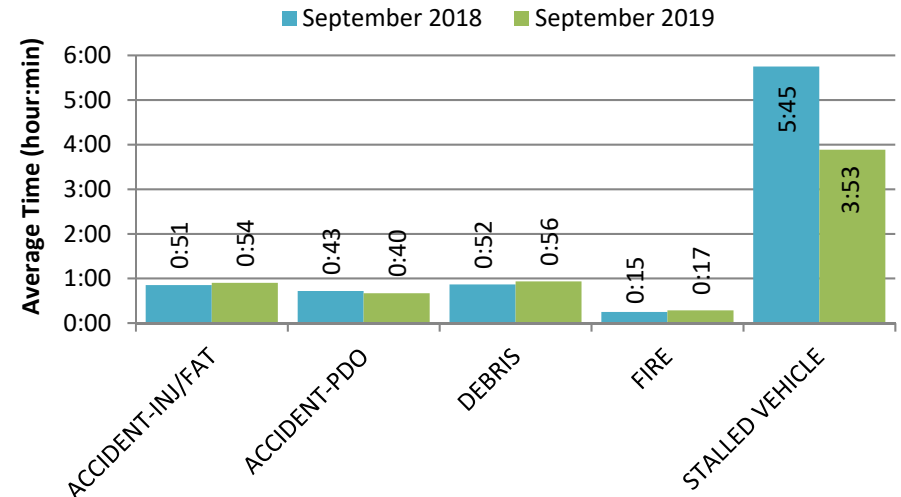


Figure 7: Average Incident Clearance time (2019 vs. 2018). Construction and tow events excluded for clarity.

Posted DMS by Time of Day

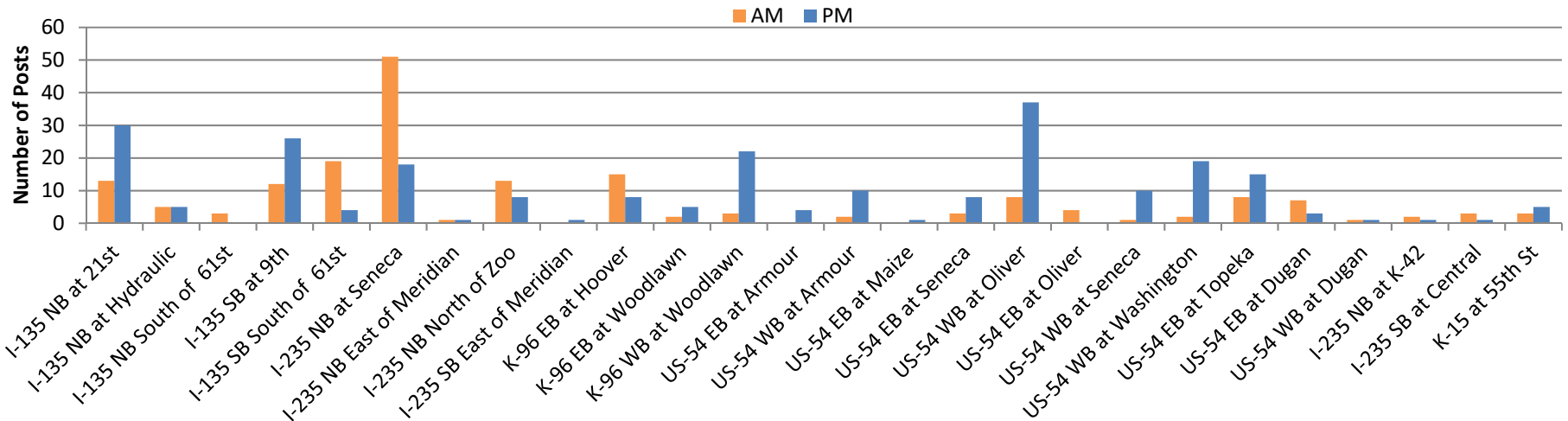


Figure 8: Number of posted messages per DMS by AM and PM hours

Posted Incidents by Type & Time of Day

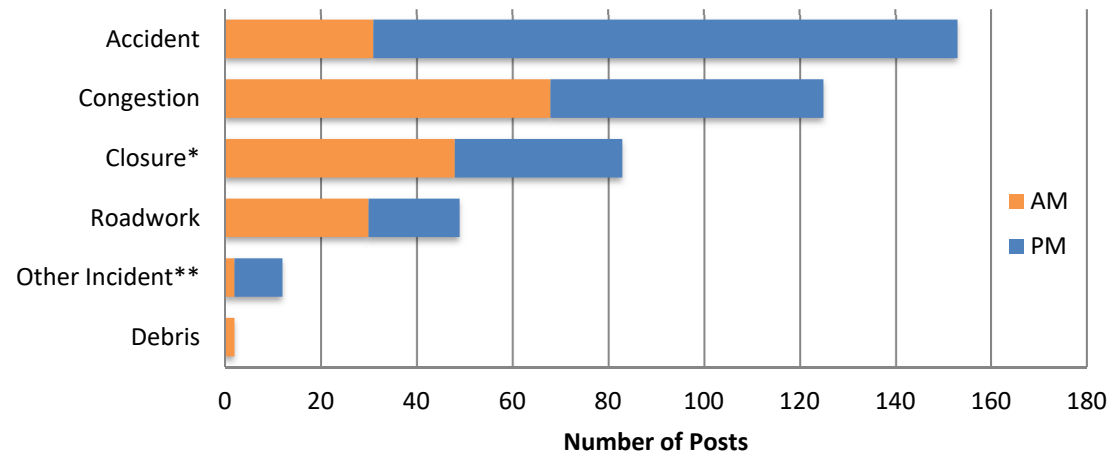


Figure 9: Posted incidents by type and AM/PM hours

Dynamic Message Sign (DMS) Utilization

WICHway utilizes 31 permanent DMS. In the month, a total of **424 messages** were posted. **84%** of DMS were used at least once for an incident.

Messages shown exclude travel times and test messages. Messages shown include modifications to previous messages.

*Closure messages include roadway closures for roadwork, incidents, and weather postings.

**Other Incidents include but are not limited to stalled vehicles, fire, and medical incidents.